

Product datasheet for **TA333784**

MRPS16 Rabbit Polyclonal Antibody

Product data:

Product Type:	Primary Antibodies
Applications:	WB
Recommended Dilution:	WB
Reactivity:	Human
Host:	Rabbit
Isotype:	IgG
Clonality:	Polyclonal
Immunogen:	The immunogen for Anti-MRPS16 Antibody is: synthetic peptide directed towards the C-terminal region of Human MRPS16. Synthetic peptide located within the following region: EKLLGLAGFFPLHPMMITNAERLRRKRAREVLLASQKTDAEATDTEATET
Formulation:	Liquid. Purified antibody supplied in 1x PBS buffer with 0.09% (w/v) sodium azide and 2% sucrose. <i>Note that this product is shipped as lyophilized powder to China customers.</i>
Purification:	Affinity Purified
Conjugation:	Unconjugated
Storage:	Store at -20°C as received.
Stability:	Stable for 12 months from date of receipt.
Predicted Protein Size:	15 kDa
Gene Name:	mitochondrial ribosomal protein S16
Database Link:	NP_057149 Entrez Gene 51021 Human Q9Y3D3



[View online »](#)

Background:

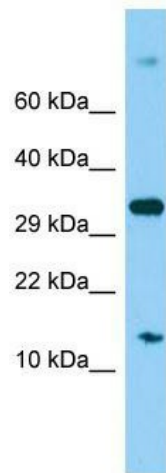
Mammalian mitochondrial ribosomal proteins are encoded by nuclear genes and help in protein synthesis within the mitochondrion. Mitochondrial ribosomes (mitoribosomes) consist of a small 28S subunit and a large 39S subunit. They have an estimated 75% protein to rRNA composition compared to prokaryotic ribosomes, where this ratio is reversed. Another difference between mammalian mitoribosomes and prokaryotic ribosomes is that the latter contain a 5S rRNA. Among different species, the proteins comprising the mitoribosome differ greatly in sequence, and sometimes in biochemical properties, which prevents easy recognition by sequence homology. This gene encodes a 28S subunit protein that belongs to the ribosomal protein S16P family. The encoded protein is one of the most highly conserved ribosomal proteins between mammalian and yeast mitochondria. Three pseudogenes (located at 8q21.3, 20q13.32, 22q12-q13.1) for this gene have been described.

Synonyms:

CGI-132; COXPD2; MRP-S16; RPMS16

Note:

Immunogen sequence homology: Human: 100%; Pig: 75%; Rat: 75%; Guinea pig: 75%

Product images:

Host: Rabbit; Target Name: MRPS16; Sample Tissue: 293T Whole Cell lysates; Antibody Dilution: 1.0 ug/ml