

## Product datasheet for **TA333779**

### VGLL3 Rabbit Polyclonal Antibody

#### Product data:

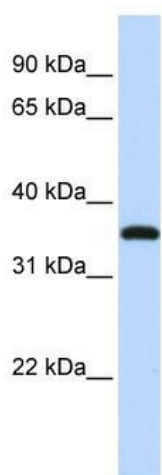
Product Type:	Primary Antibodies
Applications:	WB
Recommended Dilution:	WB
Reactivity:	Human
Host:	Rabbit
Isotype:	IgG
Clonality:	Polyclonal
Immunogen:	The immunogen for Anti-VGLL3 Antibody: synthetic peptide directed towards the middle region of human VGLL3. Synthetic peptide located within the following region: CDITKTEPTTVTSATSAWAGAFHGTVDIVPSVGFDTGLQHQDKSKESPWY
Formulation:	Liquid. Purified antibody supplied in 1x PBS buffer with 0.09% (w/v) sodium azide and 2% sucrose. <i>Note that this product is shipped as lyophilized powder to China customers.</i>
Purification:	Affinity Purified
Conjugation:	Unconjugated
Storage:	Store at -20°C as received.
Stability:	Stable for 12 months from date of receipt.
Predicted Protein Size:	36 kDa
Gene Name:	vestigial like family member 3
Database Link:	<a href="#">NP_057290</a> <a href="#">Entrez Gene 389136 Human</a> <a href="#">A8MV65</a>
Background:	VGLL3 belongs to the vestigial family. It may act as a specific coactivator for the mammalian TEFs.
Synonyms:	VGL-3; VGL3
Note:	Immunogen sequence homology: Pig: 100%; Horse: 100%; Human: 100%; Mouse: 100%; Rat: 93%; Guinea pig: 93%; Dog: 86%; Zebrafish: 83%



[View online »](#)

Protein Families: Transcription Factors

### Product images:



WB Suggested Anti-VGLL3 Antibody Titration: 0.2-1 ug/ml; ELISA Titer: 1: 312500; Positive Control: Jurkat cell lysate