

Product datasheet for **TA333778**

Claudin18 (CLDN18) Rabbit Polyclonal Antibody

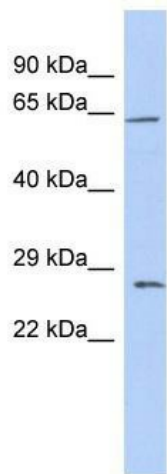
Product data:

Product Type:	Primary Antibodies
Applications:	WB
Recommended Dilution:	WB
Reactivity:	Human
Host:	Rabbit
Isotype:	IgG
Clonality:	Polyclonal
Immunogen:	The immunogen for Anti-CLDN18 Antibody: synthetic peptide directed towards the middle region of human CLDN18. Synthetic peptide located within the following region: YHASGHSVAYKPGGFKASTGFGSNTKNKKIYDGGARTEDEVQSYPSKHDY
Formulation:	Liquid. Purified antibody supplied in 1x PBS buffer with 0.09% (w/v) sodium azide and 2% sucrose. <i>Note that this product is shipped as lyophilized powder to China customers.</i>
Purification:	Affinity Purified
Conjugation:	Unconjugated
Storage:	Store at -20°C as received.
Stability:	Stable for 12 months from date of receipt.
Predicted Protein Size:	28 kDa
Gene Name:	claudin 18
Database Link:	NP_057453 Entrez Gene 51208 Human P56856



[View online »](#)

- Background:** CLDN18 plays a major role in tight junction-specific obliteration of the intercellular space, through calcium-independent cell-adhesion activity. CLDN18 belongs to the large claudin family of proteins, which form tight junction strands in epithelial cells (Niimi et al., 2001 [PubMed 11585919]). [supplied by OMIM]. Publication Note: This RefSeq record includes a subset of the publications that are available for this gene. Please see the Entrez Gene record to access additional publications. PRIMARYREFSEQ_SPAN PRIMARY_IDENTIFIER PRIMARY_SPAN COMP 1-282 AY358479.1 28-309 283-1864 AK098474.1 274-1855 1865-2307 BM785703.1 143-585 2308-2868 AK098474.1 2297-2857 2869-3359 AY102073.1 394-884
- Synonyms:** SFTA5; SFTPJ
- Note:** Immunogen sequence homology: Horse: 100%; Human: 100%; Mouse: 93%; Pig: 86%; Rat: 86%; Rabbit: 86%; Guinea pig: 86%; Dog: 79%; Bovine: 79%
- Protein Families:** Transmembrane
- Protein Pathways:** Cell adhesion molecules (CAMs), Leukocyte transendothelial migration, Tight junction
- Product images:**



WB Suggested Anti-CLDN18 Antibody Titration:
0.2-1 ug/ml; ELISA Titer: 1:62500; Positive Control:
Human Thymus