

Product datasheet for **TA333777**

gamma Tubulin (TUBG2) Rabbit Polyclonal Antibody

Product data:

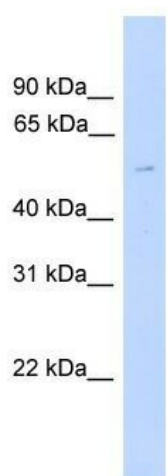
Product Type:	Primary Antibodies
Applications:	WB
Recommended Dilution:	WB
Reactivity:	Human
Host:	Rabbit
Isotype:	IgG
Clonality:	Polyclonal
Immunogen:	The immunogen for Anti-TUBG2 Antibody: synthetic peptide directed towards the middle region of human TUBG2. Synthetic peptide located within the following region: FDKLRKRDAFLEQFRKEDMFKDNFDEMDSREVVQELIDEYHAATQPDYI
Formulation:	Liquid. Purified antibody supplied in 1x PBS buffer with 0.09% (w/v) sodium azide and 2% sucrose. <i>Note that this product is shipped as lyophilized powder to China customers.</i>
Purification:	Affinity Purified
Conjugation:	Unconjugated
Storage:	Store at -20°C as received.
Stability:	Stable for 12 months from date of receipt.
Predicted Protein Size:	51 kDa
Gene Name:	tubulin gamma 2
Database Link:	NP_057521 Entrez Gene 27175 Human Q9NRH3
Background:	Tubulin is the major constituent of microtubules. Gamma tubulin is found at microtubule organizing centers (MTOC) such as the spindle poles or the centrosome, suggesting that it is involved in the minus-end nucleation of microtubule assembly.
Synonyms:	MGC131994
Note:	Immunogen sequence homology: Dog: 100%; Pig: 100%; Rat: 100%; Horse: 100%; Human: 100%; Mouse: 100%; Bovine: 100%; Rabbit: 100%; Guinea pig: 85%; Yeast: 83%; Zebrafish: 83%



[View online »](#)

Protein Families: Druggable Genome

Product images:



WB Suggested Anti-TUBG2 Antibody Titration:
0.2-1 ug/ml; ELISA Titer: 1: 12500; Positive
Control: Transfected 293T