

Product datasheet for **TA333775**

SLC25A37 Rabbit Polyclonal Antibody

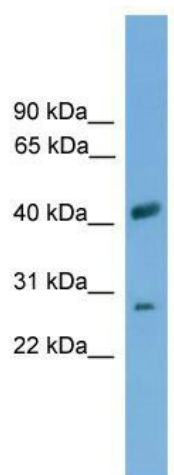
Product data:

Product Type:	Primary Antibodies
Applications:	WB
Recommended Dilution:	WB
Reactivity:	Human
Host:	Rabbit
Isotype:	IgG
Clonality:	Polyclonal
Immunogen:	The immunogen for Anti-SLC25A37 Antibody: synthetic peptide directed towards the middle region of human SLC25A37. Synthetic peptide located within the following region: RTVYQLNGLAGYFKGIQARVIYQMPSTAISWSVYEFFKYFLTKRQLENRA
Formulation:	Liquid. Purified antibody supplied in 1x PBS buffer with 0.09% (w/v) sodium azide and 2% sucrose.
Purification:	Affinity Purified
Conjugation:	Unconjugated
Storage:	Store at -20°C as received.
Stability:	Stable for 12 months from date of receipt.
Predicted Protein Size:	37 kDa
Gene Name:	solute carrier family 25 member 37
Database Link:	NP_057696 Entrez Gene 51312 Human Q9NYZ2
Background:	SLC25A37 belongs to the SLC25 family of mitochondrial carrier proteins (Haitina et al., 2006 [PubMed 16949250]).
Synonyms:	HT015; MFRN; MFRN1; MSC; MSCP; PRO1278; PRO1584; PRO2217
Note:	Immunogen sequence homology: Pig: 100%; Rat: 100%; Human: 100%; Mouse: 100%; Guinea pig: 100%; Dog: 93%; Rabbit: 93%; Bovine: 86%; Horse: 83%



[View online »](#)

Product images:



WB Suggested Anti-SLC25A37 Antibody Titration:
0.2-1 ug/ml; ELISA Titer: 1:312500; Positive
Control: THP-1 cell lysate