

Product datasheet for **TA333774**

EFEMP2 Rabbit Polyclonal Antibody

Product data:

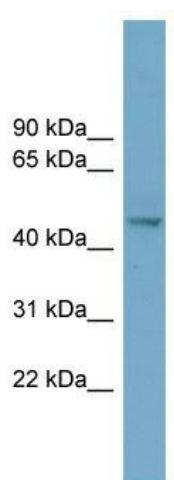
Product Type:	Primary Antibodies
Applications:	WB
Recommended Dilution:	WB
Reactivity:	Human
Host:	Rabbit
Isotype:	IgG
Clonality:	Polyclonal
Immunogen:	The immunogen for Anti-EFEMP2 Antibody: synthetic peptide directed towards the middle region of human EFEMP2. Synthetic peptide located within the following region: VSAMLVLARPVTGPREYVLDLEMVTMNSLSYRASSVLRRLTVFGAYTF
Formulation:	Liquid. Purified antibody supplied in 1x PBS buffer with 0.09% (w/v) sodium azide and 2% sucrose. <i>Note that this product is shipped as lyophilized powder to China customers.</i>
Purification:	Affinity Purified
Conjugation:	Unconjugated
Storage:	Store at -20°C as received.
Stability:	Stable for 12 months from date of receipt.
Predicted Protein Size:	49 kDa
Gene Name:	EGF containing fibulin like extracellular matrix protein 2
Database Link:	NP_058634 Entrez Gene 30008 Human O95967
Background:	A large number of extracellular matrix proteins have been found to contain variations of the epidermal growth factor (EGF) domain and have been implicated in functions as diverse as blood coagulation, activation of complement and determination of cell fate
Synonyms:	ARCL1B; FBLN4; MBP1; UPH1
Note:	Immunogen sequence homology: Dog: 100%; Pig: 100%; Rat: 100%; Horse: 100%; Human: 100%; Mouse: 100%; Bovine: 100%; Guinea pig: 100%; Zebrafish: 86%; Rabbit: 82%



[View online »](#)

Protein Families: Druggable Genome, Secreted Protein

Product images:



WB Suggested Anti-EFEMP2 Antibody Titration:
0.2-1 ug/ml; Positive Control: NCI-H226 cell lysate