

Product datasheet for **TA333773**

SLCO1C1 Rabbit Polyclonal Antibody

Product data:

Product Type:	Primary Antibodies
Applications:	WB
Recommended Dilution:	WB
Reactivity:	Human
Host:	Rabbit
Isotype:	IgG
Clonality:	Polyclonal
Immunogen:	The immunogen for Anti-SLCO1C1 Antibody: synthetic peptide directed towards the N terminal of human SLCO1C1. Synthetic peptide located within the following region: VDTSSSMWIYVFLGNLLRGIGETPIQLGIAYLDDFASEDNAAFYIGCVQ
Formulation:	Liquid. Purified antibody supplied in 1x PBS buffer with 0.09% (w/v) sodium azide and 2% sucrose.
Purification:	Affinity Purified
Conjugation:	Unconjugated
Storage:	Store at -20°C as received.
Stability:	Stable for 12 months from date of receipt.
Predicted Protein Size:	79 kDa
Gene Name:	solute carrier organic anion transporter family member 1C1
Database Link:	NP_059131 Entrez Gene 53919 Human Q9NYB5
Background:	SLCO1C1 is a member of the organic anion transporter family. SLCO1C1 is a transmembrane receptor that mediates the sodium-independent uptake of thyroid hormones in brain tissues. This protein has particularly high affinity for the thyroid hormones thyroxine, tri-iodothyronine and reverse tri-iodothyronine. Polymorphisms in the gene encoding this protein may be associated with fatigue and depression in patients suffering from hyperthyroidism.
Synonyms:	OATP-F; OATP1; OATP1C1; OATP14; OATPF; OATPRP5; SLC21A14

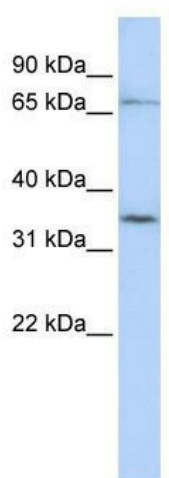


[View online »](#)

Note: Immunogen sequence homology: Dog: 100%; Pig: 100%; Rat: 100%; Horse: 100%; Human: 100%; Mouse: 100%; Rabbit: 100%; Guinea pig: 100%; Bovine: 93%; Yeast: 83%

Protein Families: Transmembrane

Product images:



WB Suggested Anti-SLCO1C1 Antibody Titration:
0.2-1 ug/ml; ELISA Titer: 1:312500; Positive
Control: Jurkat cell lysate