

Product datasheet for **TA333772**

SLC35F2 Rabbit Polyclonal Antibody

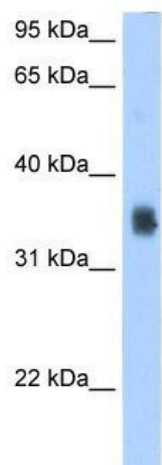
Product data:

Product Type:	Primary Antibodies
Applications:	IHC, WB
Recommended Dilution:	WB, IHC
Reactivity:	Human
Host:	Rabbit
Isotype:	IgG
Clonality:	Polyclonal
Immunogen:	The immunogen for Anti-SLC35F2 Antibody: synthetic peptide directed towards the N terminal of human SLC35F2. Synthetic peptide located within the following region: MEADSPAGPGAPEPLAEGAAAEFSSLLRRIKGLFTWNILKTIALGQMLS
Formulation:	Liquid. Purified antibody supplied in 1x PBS buffer with 0.09% (w/v) sodium azide and 2% sucrose. <i>Note that this product is shipped as lyophilized powder to China customers.</i>
Purification:	Affinity Purified
Conjugation:	Unconjugated
Storage:	Store at -20°C as received.
Stability:	Stable for 12 months from date of receipt.
Predicted Protein Size:	41 kDa
Gene Name:	solute carrier family 35 member F2
Database Link:	NP_059985 Entrez Gene 54733 Human Q8IXU6
Background:	SLC35F2 is a putative solute transporter.
Synonyms:	HSNOV1
Note:	Immunogen sequence homology: Human: 100%
Protein Families:	Transmembrane

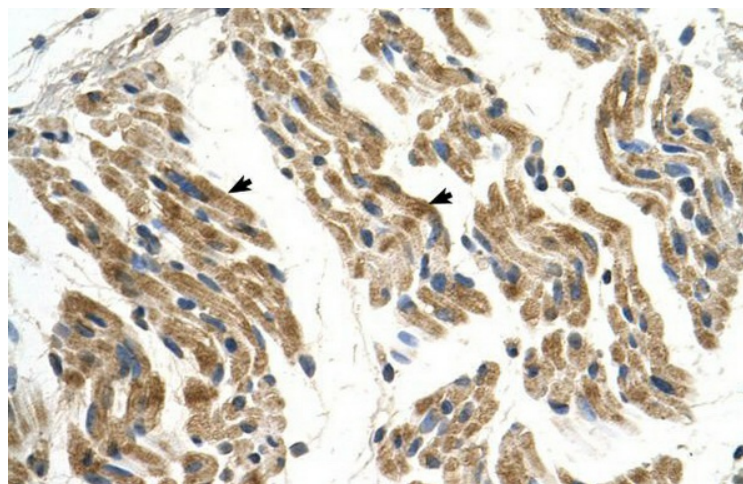


[View online »](#)

Product images:



WB Suggested Antibody Titration: 2.5 ug/ml;
Positive Control: 293T



Human Muscle