

## Product datasheet for **TA333771**

### SLC2A6 Rabbit Polyclonal Antibody

#### Product data:

Product Type:	Primary Antibodies
Applications:	IHC, WB
Recommended Dilution:	WB, IHC
Reactivity:	Human
Host:	Rabbit
Isotype:	IgG
Clonality:	Polyclonal
Immunogen:	The immunogen for Anti-SLC2A6 Antibody: synthetic peptide directed towards the C terminal of human SLC2A6. Synthetic peptide located within the following region: AANLTLGLYIHFGPRPLSPNSTAGLESESWGDLAQPLAAPAGYLVPLL
Formulation:	Liquid. Purified antibody supplied in 1x PBS buffer with 0.09% (w/v) sodium azide and 2% sucrose. <i>Note that this product is shipped as lyophilized powder to China customers.</i>
Purification:	Affinity Purified
Conjugation:	Unconjugated
Storage:	Store at -20°C as received.
Stability:	Stable for 12 months from date of receipt.
Predicted Protein Size:	56 kDa
Gene Name:	solute carrier family 2 member 6
Database Link:	<a href="#">NP_060055</a> <a href="#">Entrez Gene 11182 Human</a> <a href="#">Q9UGQ3</a>
Background:	Hexose transport into mammalian cells is catalyzed by a family of membrane proteins, including SLC2A6, which contains 12 transmembrane domains and a number of critical conserved residues. Hexose transport into mammalian cells is catalyzed by a family of membrane proteins, including SLC2A6, that contain 12 transmembrane domains and a number of critical conserved residues. [supplied by OMIM]
Synonyms:	GLUT6; GLUT9; HSA011372

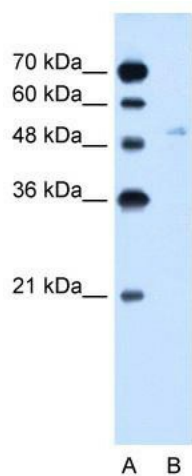


[View online »](#)

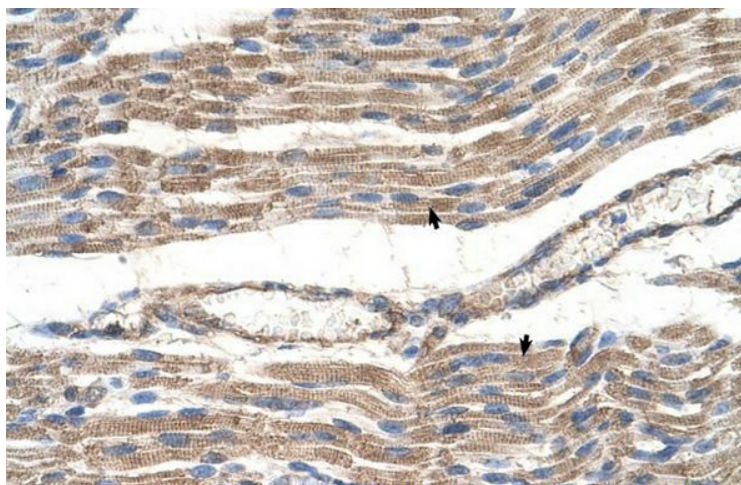
Note: Immunogen sequence homology: Human: 100%

Protein Families: Transmembrane

### Product images:



WB Suggested Anti-SLC2A6 Antibody Titration: 2.5 ug/ml; Positive Control: Jurkat cell lysate



Paraffin Embedded Tissue: Human Muscle  
Cellular Data: Skeletal muscle cells  
Antibody Concentration: 4.0-8.0 ug/ml  
Magnification: 400X