

Product datasheet for **TA333769**

SLC43A3 Rabbit Polyclonal Antibody

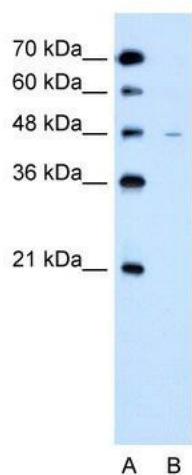
Product data:

Product Type:	Primary Antibodies
Applications:	IHC, WB
Recommended Dilution:	WB, IHC
Reactivity:	Human
Host:	Rabbit
Isotype:	IgG
Clonality:	Polyclonal
Immunogen:	The immunogen for Anti-SLC43A3 Antibody: synthetic peptide directed towards the N terminal of human SLC43A3. Synthetic peptide located within the following region: MAGQGLPLHVATLLTGLLECLGFAGVLFGWPSLVFVFKNEDYFKDLCGPD
Formulation:	Liquid. Purified antibody supplied in 1x PBS buffer with 0.09% (w/v) sodium azide and 2% sucrose. <i>Note that this product is shipped as lyophilized powder to China customers.</i>
Purification:	Affinity Purified
Conjugation:	Unconjugated
Storage:	Store at -20°C as received.
Stability:	Stable for 12 months from date of receipt.
Predicted Protein Size:	54 kDa
Gene Name:	solute carrier family 43 member 3
Database Link:	NP_060081 Entrez Gene 29015 Human Q8NBI5
Background:	SLC43A3 belongs to the SLC43A transporter family and is a putative transporter.
Synonyms:	EEG1; FOAP-13; PRO1659; SEEEG-1
Note:	Immunogen sequence homology: Human: 100%; Dog: 92%; Rabbit: 92%; Horse: 86%
Protein Families:	Transmembrane

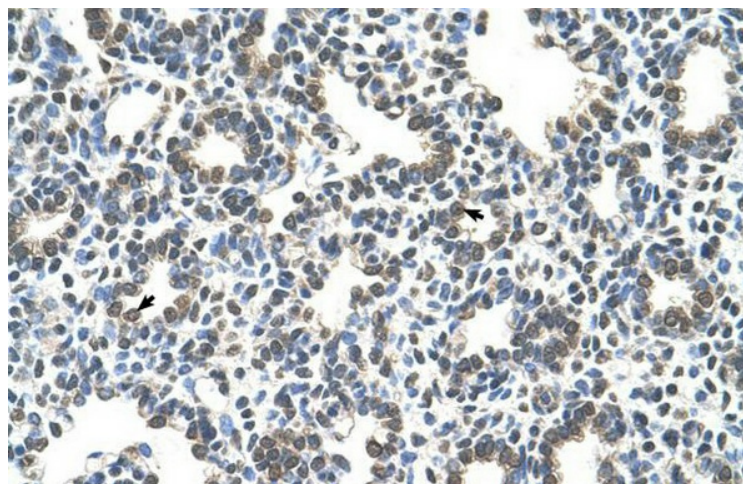


[View online »](#)

Product images:



WB Suggested Anti-SLC43A3 Antibody Titration: 2.5 ug/ml; Positive Control: Jurkat cell lysate; SLC43A3 is strongly supported by BioGPS gene expression data to be expressed in Human Jurkat cells



Human Lung