

Product datasheet for **TA333768**

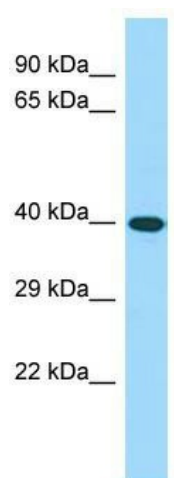
CWC25 Rabbit Polyclonal Antibody

Product data:

Product Type:	Primary Antibodies
Applications:	WB
Recommended Dilution:	WB
Reactivity:	Human
Host:	Rabbit
Isotype:	IgG
Clonality:	Polyclonal
Immunogen:	The immunogen for Anti-CWC25 Antibody is: synthetic peptide directed towards the C-terminal region of Human CWC25. Synthetic peptide located within the following region: RRETGQTRSPSPKKEVYQRRHAPGYTRKLSAEELERKRQEMMENAKWREE
Formulation:	Liquid. Purified antibody supplied in 1x PBS buffer with 0.09% (w/v) sodium azide and 2% sucrose. <i>Note that this product is shipped as lyophilized powder to China customers.</i>
Purification:	Affinity Purified
Conjugation:	Unconjugated
Storage:	Store at -20°C as received.
Stability:	Stable for 12 months from date of receipt.
Predicted Protein Size:	39 kDa
Gene Name:	CWC25 spliceosome-associated protein homolog
Database Link:	NP_060218 Entrez Gene 54883 Human Q9NXE8
Background:	The function of this protein remains unknown.
Synonyms:	CCDC49
Note:	Immunogen sequence homology: Human: 100%; Rabbit: 86%; Horse: 79%



[View online »](#)

Product images:

Host: Rabbit; Target Name: CWC25; Sample
Tissue: Fetal Brain lysates; Antibody Dilution: 1.0
ug/ml