

Product datasheet for **TA333766**

SLC39A4 Rabbit Polyclonal Antibody

Product data:

Product Type:	Primary Antibodies
Applications:	WB
Recommended Dilution:	WB
Reactivity:	Human
Host:	Rabbit
Isotype:	IgG
Clonality:	Polyclonal
Immunogen:	The immunogen for Anti-SLC39A4 Antibody: synthetic peptide directed towards the N terminal of human SLC39A4. Synthetic peptide located within the following region: PQCLSVEDALGLGEPEGSGLPVLEARYVARLSAAAVLYLSNPEGTCE
Formulation:	Liquid. Purified antibody supplied in 1x PBS buffer with 0.09% (w/v) sodium azide and 2% sucrose. <i>Note that this product is shipped as lyophilized powder to China customers.</i>
Purification:	Affinity Purified
Conjugation:	Unconjugated
Storage:	Store at -20°C as received.
Stability:	Stable for 12 months from date of receipt.
Predicted Protein Size:	66 kDa
Gene Name:	solute carrier family 39 member 4
Database Link:	NP_060237 Entrez Gene 55630 Human Q6P5W5



[View online »](#)

Background:

SLC39A4 is a member of the zinc/iron-regulated transporter-like protein (ZIP) family. The transmembrane protein is required for zinc uptake in the intestine. Mutations in the gene encoding SLC39A4 result in acrodermatitis enteropathica, a rare inherited defect in the absorption of dietary zinc. This gene encodes a member of the zinc/iron-regulated transporter-like protein (ZIP) family. The transmembrane protein is required for zinc uptake in the intestine. Mutations in this gene result in acrodermatitis enteropathica, a rare inherited defect in the absorption of dietary zinc. Multiple transcript variants encoding different isoforms have been found for this gene.

Synonyms:

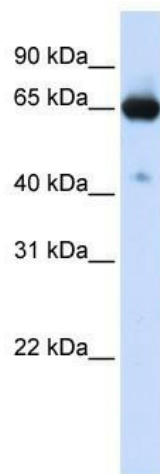
AEZ; AWMS2; ZIP4

Note:

Immunogen sequence homology: Rat: 100%; Human: 100%; Rabbit: 92%

Protein Families:

Transmembrane

Product images:

WB Suggested Anti-SLC39A4 Antibody Titration:
0.2-1 ug/ml; ELISA Titer: 1:1562500; Positive
Control: Transfected 293T