

## Product datasheet for **TA333765**

### SLC25A38 Rabbit Polyclonal Antibody

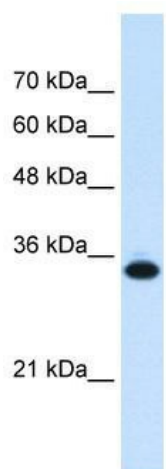
#### Product data:

Product Type:	Primary Antibodies
Applications:	IHC, WB
Recommended Dilution:	WB, IHC
Reactivity:	Human
Host:	Rabbit
Isotype:	IgG
Clonality:	Polyclonal
Immunogen:	The immunogen for Anti-SLC25A38 Antibody: synthetic peptide directed towards the middle region of human SLC25A38. Synthetic peptide located within the following region: VGIYFGTLYSLKQYFLRGHPPTALESVMLGVGSRVAGVCMSPITVIKTR
Formulation:	Liquid. Purified antibody supplied in 1x PBS buffer with 0.09% (w/v) sodium azide and 2% sucrose. <i>Note that this product is shipped as lyophilized powder to China customers.</i>
Purification:	Affinity Purified
Conjugation:	Unconjugated
Storage:	Store at -20°C as received.
Stability:	Stable for 12 months from date of receipt.
Predicted Protein Size:	33 kDa
Gene Name:	solute carrier family 25 member 38
Database Link:	<a href="#">NP_060345</a> <a href="#">Entrez Gene 54977 Human</a> <a href="#">Q96DW6</a>
Background:	SLC25A38 is a members of the solute carrier family 25 (SLC25) which is known to transport molecules over the mitochondrial membrane.
Synonyms:	SIDBA2
Note:	Immunogen sequence homology: Dog: 100%; Pig: 100%; Rat: 100%; Horse: 100%; Human: 100%; Mouse: 100%; Sheep: 100%; Bovine: 100%; Rabbit: 100%; Guinea pig: 93%

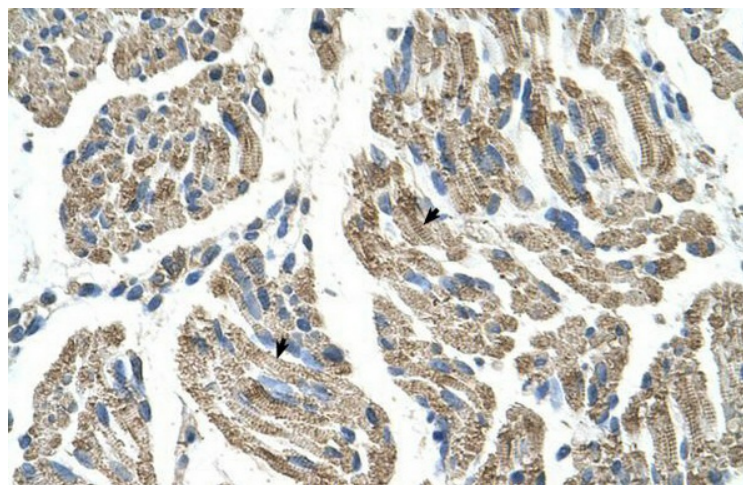


[View online »](#)

## Product images:



WB Suggested Anti-SLC25A38 Antibody Titration:  
0.2-1 ug/ml; Positive Control: Jurkat cell lysate



Human Muscle