

## Product datasheet for **TA333764**

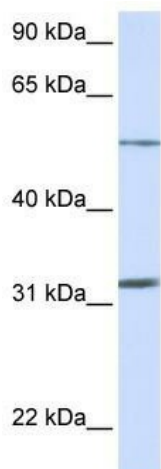
### SLC35A5 Rabbit Polyclonal Antibody

#### Product data:

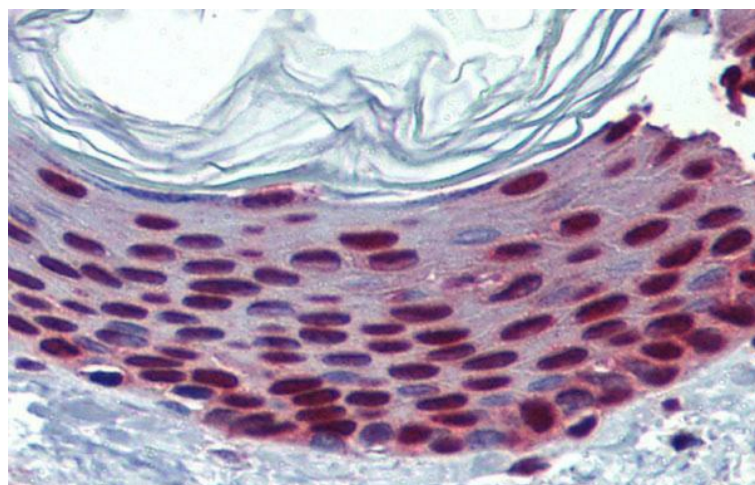
Product Type:	Primary Antibodies
Applications:	IHC, WB
Recommended Dilution:	WB, IHC
Reactivity:	Human
Host:	Rabbit
Isotype:	IgG
Clonality:	Polyclonal
Immunogen:	The immunogen for Anti-SLC35A5 Antibody: synthetic peptide directed towards the N terminal of human SLC35A5. Synthetic peptide located within the following region: LVKYSANEENKYDYLPTTVNVCSLVKLVFCVLVSFCVIKKDHQSRNLKY
Formulation:	Liquid. Purified antibody supplied in 1x PBS buffer with 0.09% (w/v) sodium azide and 2% sucrose.
Purification:	Affinity Purified
Conjugation:	Unconjugated
Storage:	Store at -20°C as received.
Stability:	Stable for 12 months from date of receipt.
Predicted Protein Size:	48 kDa
Gene Name:	solute carrier family 35 member A5
Database Link:	<a href="#">NP_060415</a> <a href="#">Entrez Gene 55032 Human</a> <a href="#">Q9BS91</a>
Background:	SLC35A5 belongs to the nucleotide-sugar transporter family, SLC35A subfamily. It is a multi-pass membrane protein. The function of the SLC35A5 protein remains unknown.
Synonyms:	DKFZp434E102; FLJ111130; FLJ20730; FLJ25973
Note:	Immunogen sequence homology: Dog: 100%; Pig: 100%; Rat: 100%; Horse: 100%; Human: 100%; Mouse: 100%; Bovine: 100%; Guinea pig: 100%; Rabbit: 93%; Zebrafish: 85%
Protein Families:	Transmembrane



[View online »](#)

**Product images:**

WB Suggested Anti-SLC35A5 Antibody Titration:  
0.2-1 ug/ml; ELISA Titer: 1:62500; Positive Control:  
Human Muscle



Immunohistochemistry with Human Skin lysate  
tissue at an antibody concentration of 5.0 ug/ml  
using anti-SLC35A5 antibody