

## Product datasheet for **TA333763**

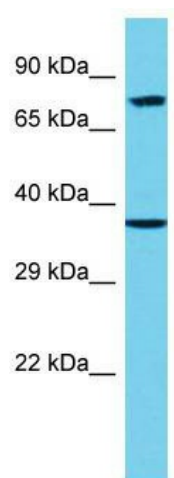
### EPN3 Rabbit Polyclonal Antibody

#### Product data:

Product Type:	Primary Antibodies
Applications:	WB
Recommended Dilution:	WB
Reactivity:	Human
Host:	Rabbit
Isotype:	IgG
Clonality:	Polyclonal
Immunogen:	The immunogen for Anti-EPN3 Antibody is: synthetic peptide directed towards the C-terminal region of Human EPN3. Synthetic peptide located within the following region: ESTETKEGLEQALPSGKPPVELDLFGDPSPSSKQNGTKEPDALDLGIL
Formulation:	Liquid. Purified antibody supplied in 1x PBS buffer with 0.09% (w/v) sodium azide and 2% sucrose. <i>Note that this product is shipped as lyophilized powder to China customers.</i>
Purification:	Affinity Purified
Conjugation:	Unconjugated
Storage:	Store at -20°C as received.
Stability:	Stable for 12 months from date of receipt.
Predicted Protein Size:	70 kDa
Gene Name:	epsin 3
Database Link:	<a href="#">NP_060427</a> <a href="#">Entrez Gene 55040 Human</a> <a href="#">Q9H201</a>
Background:	The function of this protein remains unknown.
Synonyms:	FLJ20778; MGC129899
Note:	Immunogen sequence homology: Human: 100%; Dog: 93%; Pig: 93%; Horse: 93%; Rabbit: 93%; Guinea pig: 93%; Rat: 86%; Mouse: 79%; Bovine: 79%
Protein Pathways:	Endocytosis



[View online »](#)

**Product images:**

Host: Rabbit; Target Name: EPN3; Sample Tissue: 293T Whole Cell lysates; Antibody Dilution: 1.0 ug/ml