

Product datasheet for **TA333762**

SSBP3 Rabbit Polyclonal Antibody

Product data:

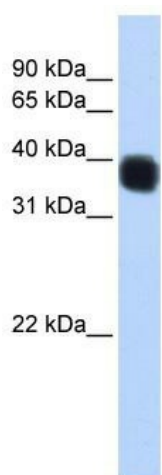
Product Type:	Primary Antibodies
Applications:	WB
Recommended Dilution:	WB
Reactivity:	Human
Host:	Rabbit
Isotype:	IgG
Clonality:	Polyclonal
Immunogen:	The immunogen for Anti-SSBP3 Antibody: synthetic peptide directed towards the middle region of human SSBP3. Synthetic peptide located within the following region: DIDGLPKNSPNNISGISNPPGTPRDDGELGGNFLHSFQNDNYSPSMTMSV
Formulation:	Liquid. Purified antibody supplied in 1x PBS buffer with 0.09% (w/v) sodium azide and 2% sucrose. <i>Note that this product is shipped as lyophilized powder to China customers.</i>
Purification:	Affinity Purified
Conjugation:	Unconjugated
Storage:	Store at -20°C as received.
Stability:	Stable for 12 months from date of receipt.
Predicted Protein Size:	38 kDa
Gene Name:	single stranded DNA binding protein 3
Database Link:	NP_060540 Entrez Gene 23648 Human Q9BWW4
Background:	SSBP3 may be involved in transcription regulation of the alpha 2(I) collagen gene where it binds to the single-stranded polypyrimidine sequences in the promoter region.
Synonyms:	CSDP; SSDP; SSDP1
Note:	Immunogen sequence homology: Dog: 100%; Pig: 100%; Rat: 100%; Horse: 100%; Human: 100%; Mouse: 100%; Bovine: 100%; Rabbit: 100%; Guinea pig: 93%; Zebrafish: 91%



[View online »](#)

Protein Families: Transcription Factors

Product images:



WB Suggested Anti-SSBP3 Antibody Titration: 0.2-1 ug/ml; ELISA Titer: 1: 312500; Positive Control: MCF7 cell lysate