

Product datasheet for **TA333759**

GSPT2 Rabbit Polyclonal Antibody

Product data:

Product Type:	Primary Antibodies
Applications:	WB
Recommended Dilution:	WB
Reactivity:	Human
Host:	Rabbit
Isotype:	IgG
Clonality:	Polyclonal
Immunogen:	The immunogen for Anti-GSPT2 Antibody: synthetic peptide directed towards the N terminal of human GSPT2. Synthetic peptide located within the following region: MALEESWEHSKEVSEAEPGGSSGDSGPPEESGQEMMEEKKEIRKSKSVI
Formulation:	Liquid. Purified antibody supplied in 1x PBS buffer with 0.09% (w/v) sodium azide and 2% sucrose. <i>Note that this product is shipped as lyophilized powder to China customers.</i>
Purification:	Affinity Purified
Conjugation:	Unconjugated
Storage:	Store at -20°C as received.
Stability:	Stable for 12 months from date of receipt.
Predicted Protein Size:	69 kDa
Gene Name:	G1 to S phase transition 2
Database Link:	NP_060564 Entrez Gene 23708 Human Q8IYD1



[View online »](#)

Background:

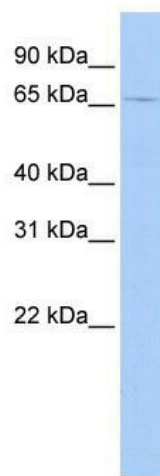
GSPT2 is closely related to GSPT1, a GTP-binding protein that plays an essential role at the G1- to S-phase transition of the cell cycle in yeast and human cells. GSPT1 is a positive regulator of translational accuracy and, in a binary complex with eRF1, functions as a polypeptide chain release factor. GSPT2 is closely related to GSPT1 (MIM 139259), a GTP-binding protein that plays an essential role at the G1- to S-phase transition of the cell cycle in yeast and human cells. GSPT1 is a positive regulator of translational accuracy and, in a binary complex with eRF1 (MIM 600285), functions as a polypeptide chain release factor. [supplied by OMIM]. PRIMARYREFSEQ_SPAN PRIMARY_IDENTIFIER PRIMARY_SPAN COMP 1-207 BC036077.1 1-207 208-1527 AJ251548.1 12-1331 1528-2497 AK001303.1 1512-2481 2498-2503 AK023155.1 2487-2492

Synonyms:

ERF3B; GST2

Note:

Immunogen sequence homology: Human: 100%; Pig: 86%; Rat: 86%; Horse: 86%; Mouse: 86%

Product images:

WB Suggested Anti-GSPT2 Antibody Titration: 0.2-1 ug/ml; ELISA Titer: 1: 62500; Positive Control: MCF7 cell lysate