

## Product datasheet for **TA333758**

### SDAD1 Rabbit Polyclonal Antibody

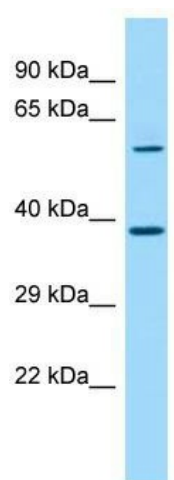
#### Product data:

Product Type:	Primary Antibodies
Applications:	WB
Recommended Dilution:	WB
Reactivity:	Human
Host:	Rabbit
Isotype:	IgG
Clonality:	Polyclonal
Immunogen:	The immunogen for Anti-SDAD1 Antibody is: synthetic peptide directed towards the C-terminal region of Human SDAD1. Synthetic peptide located within the following region: KTKTNPFSSSTNKEKKKQKNFMMMRYSQNVRSKNKRSFREKQLALRDALL
Formulation:	Liquid. Purified antibody supplied in 1x PBS buffer with 0.09% (w/v) sodium azide and 2% sucrose.
Purification:	Affinity Purified
Conjugation:	Unconjugated
Storage:	Store at -20°C as received.
Stability:	Stable for 12 months from date of receipt.
Predicted Protein Size:	64 kDa
Gene Name:	SDA1 domain containing 1
Database Link:	<a href="#">NP_060585</a> <a href="#">Entrez Gene 55153 Human</a> <a href="#">Q9NVU7</a>
Background:	SDAD1 is required for 60S pre-ribosomal subunits export to the cytoplasm.
Synonyms:	DKFZp686E22207; FLJ10498
Note:	Immunogen sequence homology: Human: 100%; Rabbit: 100%; Dog: 93%; Pig: 93%; Rat: 93%; Horse: 93%; Bovine: 93%; Guinea pig: 93%; Zebrafish: 86%; Mouse: 79%



[View online »](#)

## Product images:



Host: Rabbit; Target Name: SDAD1; Sample  
Tissue: Fetal Heart lysates; Antibody Dilution: 1.0  
ug/ml