

Product datasheet for **TA333757**

SLC25A36 Rabbit Polyclonal Antibody

Product data:

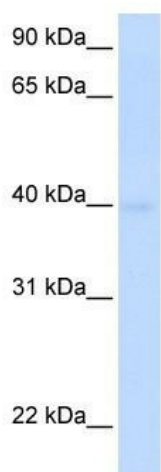
Product Type:	Primary Antibodies
Applications:	WB
Recommended Dilution:	WB
Reactivity:	Human
Host:	Rabbit
Isotype:	IgG
Clonality:	Polyclonal
Immunogen:	The immunogen for Anti-SLC25A36 Antibody: synthetic peptide directed towards the N terminal of human SLC25A36. Synthetic peptide located within the following region: SSSVTLYISEVQLNTMAGASVNRVSPGPLHCLKVILEKEGPRSLFRGLG
Formulation:	Liquid. Purified antibody supplied in 1x PBS buffer with 0.09% (w/v) sodium azide and 2% sucrose. <i>Note that this product is shipped as lyophilized powder to China customers.</i>
Purification:	Affinity Purified
Conjugation:	Unconjugated
Storage:	Store at -20°C as received.
Stability:	Stable for 12 months from date of receipt.
Predicted Protein Size:	34 kDa
Gene Name:	solute carrier family 25 member 36
Database Link:	NP_060625 Entrez Gene 55186 Human Q96CQ1
Background:	SLC25A36 belongs to the mitochondrial carrier family. It contains 3 Solcar repeats. SLC25A36 is a multi-pass membrane protein. The function of the SLC25A36 protein remains unknown.
Synonyms:	PNC2
Note:	Immunogen sequence homology: Dog: 100%; Pig: 100%; Rat: 100%; Horse: 100%; Human: 100%; Mouse: 100%; Bovine: 100%; Rabbit: 93%; Guinea pig: 93%; Zebrafish: 79%



[View online »](#)

Protein Families: Druggable Genome, Transmembrane

Product images:



WB Suggested Anti-SLC25A36 Antibody Titration:
0.2-1 ug/ml; ELISA Titer: 1:312500; Positive
Control: Human Muscle