

Product datasheet for **TA333755**

C20orf20 (MRGBP) Rabbit Polyclonal Antibody

Product data:

Product Type:	Primary Antibodies
Applications:	WB
Recommended Dilution:	WB
Reactivity:	Human
Host:	Rabbit
Isotype:	IgG
Clonality:	Polyclonal
Immunogen:	The immunogen for Anti-C20ORF20 Antibody: synthetic peptide directed towards the middle region of human C20ORF20. Synthetic peptide located within the following region: LSTMYDMQALHESEILPFPNPERNFVLPEEIIQEVREGKVMIEEEMKEEM
Formulation:	Liquid. Purified antibody supplied in 1x PBS buffer with 0.09% (w/v) sodium azide and 2% sucrose. <i>Note that this product is shipped as lyophilized powder to China customers.</i>
Purification:	Affinity Purified
Conjugation:	Unconjugated
Storage:	Store at -20°C as received.
Stability:	Stable for 12 months from date of receipt.
Predicted Protein Size:	22 kDa
Gene Name:	MRG/MORF4L binding protein
Database Link:	NP_060740 Entrez Gene 55257 Human Q9NV56



[View online »](#)

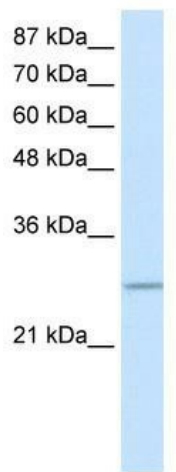
Background: C20orf20 belongs to the EAF7 family. It is a component of the NuA4 histone acetyltransferase (HAT) complex which is involved in transcriptional activation of select genes principally by acetylation of nucleosomal histone H4 and H2A. This complex may be required for the activation of transcriptional programs associated with oncogene and proto-oncogene mediated growth induction, tumor suppressor mediated growth arrest and replicative senescence, apoptosis, and DNA repair. NuA4 may also play a direct role in DNA repair when recruited to sites of DNA damage.

Synonyms: C20orf20; Eaf7; MRG15BP; URCC4

Note: Immunogen sequence homology: Pig: 100%; Rat: 100%; Horse: 100%; Human: 100%; Guinea pig: 100%; Dog: 93%; Mouse: 93%; Bovine: 93%; Zebrafish: 79%

Protein Families: Transcription Factors

Product images:



WB Suggested Anti-C20ORF20 Antibody Titration:
0.2-1 ug/ml; ELISA Titer: 1:312500; Positive
Control: Transfected 293T