

Product datasheet for **TA333754**

C20orf20 (MRGBP) Rabbit Polyclonal Antibody

Product data:

| | |
|-------------------------|---|
| Product Type: | Primary Antibodies |
| Applications: | WB |
| Recommended Dilution: | WB |
| Reactivity: | Human |
| Host: | Rabbit |
| Isotype: | IgG |
| Clonality: | Polyclonal |
| Immunogen: | The immunogen for Anti-C20ORF20 Antibody: synthetic peptide directed towards the N terminal of human C20ORF20. Synthetic peptide located within the following region: MGAEVGGGGGAAGDKGPGEAATSPAETVWWSPEVEVCLFHAMLGHKPVG |
| Formulation: | Liquid. Purified antibody supplied in 1x PBS buffer with 0.09% (w/v) sodium azide and 2% sucrose. <i>Note that this product is shipped as lyophilized powder to China customers.</i> |
| Purification: | Affinity Purified |
| Conjugation: | Unconjugated |
| Storage: | Store at -20°C as received. |
| Stability: | Stable for 12 months from date of receipt. |
| Predicted Protein Size: | 22 kDa |
| Gene Name: | MRG/MORF4L binding protein |
| Database Link: | NP_060740 Entrez Gene 55257 Human Q9NV56 |
| Background: | C20orf20 is a component of the NuA4 histone acetyltransferase (HAT) complex which is involved in transcriptional activation of select genes principally by acetylation of nucleosomal histone H4 and H2A. This complex may be required for the activation of transcriptional programs associated with oncogene and proto-oncogene mediated growth induction, tumor suppressor mediated growth arrest and replicative senescence, apoptosis, and DNA repair. |
| Synonyms: | C20orf20; Eaf7; MRG15BP; URCC4 |

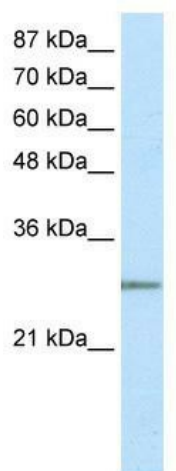


[View online »](#)

Note: Immunogen sequence homology: Human: 100%; Pig: 93%; Guinea pig: 93%; Rat: 86%; Mouse: 86%

Protein Families: Transcription Factors

Product images:



WB Suggested Anti-C20ORF20 Antibody Titration:
2.5 ug/ml; ELISA Titer: 1:62500; Positive Control:
Transfected 293T