

Product datasheet for **TA333753**

SLC39A9 Rabbit Polyclonal Antibody

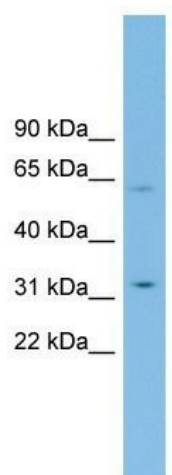
Product data:

Product Type:	Primary Antibodies
Applications:	WB
Recommended Dilution:	WB
Reactivity:	Human
Host:	Rabbit
Isotype:	IgG
Clonality:	Polyclonal
Immunogen:	The immunogen for Anti-SLC39A9 Antibody: synthetic peptide directed towards the middle region of human SLC39A9. Synthetic peptide located within the following region: YIGVSLVLGFVFMILLVDQIGNSHVHSTDDPEAARSSNSKITTTLGLVHA
Formulation:	Liquid. Purified antibody supplied in 1x PBS buffer with 0.09% (w/v) sodium azide and 2% sucrose. <i>Note that this product is shipped as lyophilized powder to China customers.</i>
Purification:	Affinity Purified
Conjugation:	Unconjugated
Storage:	Store at -20°C as received.
Stability:	Stable for 12 months from date of receipt.
Predicted Protein Size:	32 kDa
Gene Name:	solute carrier family 39 member 9
Database Link:	NP_060845 Entrez Gene 55334 Human Q9NUM3
Background:	SLC39A9 may act as a zinc-influx transporter.
Synonyms:	ZIP-9; ZIP9
Note:	Immunogen sequence homology: Human: 100%; Dog: 86%; Pig: 86%; Horse: 86%; Bovine: 86%; Rat: 83%; Rabbit: 79%; Guinea pig: 79%
Protein Families:	Transmembrane



[View online »](#)

Product images:



WB Suggested Anti-SLC39A9 Antibody Titration:
0.2-1 ug/ml; ELISA Titer: 1:312500; Positive
Control: U937 cell lysate