

Product datasheet for **TA333751**

SLC22A15 Rabbit Polyclonal Antibody

Product data:

Product Type:	Primary Antibodies
Applications:	WB
Recommended Dilution:	WB
Reactivity:	Human
Host:	Rabbit
Isotype:	IgG
Clonality:	Polyclonal
Immunogen:	The immunogen for Anti-SLC22A15 Antibody: synthetic peptide directed towards the middle region of human SLC22A15. Synthetic peptide located within the following region: NQKWFGRKRTLSAFLCLGGLACLIVMFLPEKKDTGVFAVNSHSLSLGK
Formulation:	Liquid. Purified antibody supplied in 1x PBS buffer with 0.09% (w/v) sodium azide and 2% sucrose.
Purification:	Affinity Purified
Conjugation:	Unconjugated
Storage:	Store at -20°C as received.
Stability:	Stable for 12 months from date of receipt.
Predicted Protein Size:	59 kDa
Gene Name:	solute carrier family 22 member 15
Database Link:	NP_060890 Entrez Gene 55356 Human Q8IZD6
Background:	Organic ion transporters, such as SLC22A15, transport various medically and physiologically important compounds, including pharmaceuticals, toxins, hormones, neurotransmitters, and cellular metabolites. These transporters are also referred to as amphiphilic solute facilitators (ASFs). [supplied by OMIM, Apr 2004]. ##Evidence-Data-START## Transcript exon combination :: BC026358.1, BC070033.1 [ECO:0000332] RNAseq introns :: single sample supports all introns ERS025081, ERS025082 [ECO:0000348] ##Evidence-Data-END##
Synonyms:	FLIPT1; PRO34686

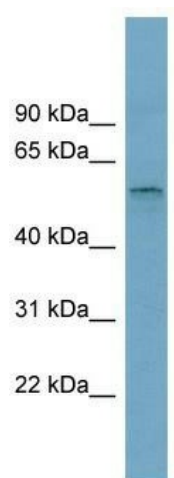


[View online »](#)

Note: Immunogen sequence homology: Dog: 100%; Pig: 100%; Rat: 100%; Horse: 100%; Human: 100%; Mouse: 100%; Bovine: 100%; Rabbit: 100%; Guinea pig: 100%

Protein Families: Transmembrane

Product images:



WB Suggested Anti-SLC22A15 Antibody Titration:
0.2-1 ug/ml; Positive Control: OVCAR-3 cell lysate