

## Product datasheet for **TA333750**

### SLC22A11 Rabbit Polyclonal Antibody

#### Product data:

Product Type:	Primary Antibodies
Applications:	WB
Recommended Dilution:	WB
Reactivity:	Human
Host:	Rabbit
Isotype:	IgG
Clonality:	Polyclonal
Immunogen:	The immunogen for Anti-SLC22A11 Antibody: synthetic peptide directed towards the C terminal of human SLC22A11. Synthetic peptide located within the following region: ASSLVLFFLPETQGLPLPDTIQDLESQKSTAAQGNRQEAVTVESTSL
Formulation:	Liquid. Purified antibody supplied in 1x PBS buffer with 0.09% (w/v) sodium azide and 2% sucrose. <i>Note that this product is shipped as lyophilized powder to China customers.</i>
Purification:	Affinity Purified
Conjugation:	Unconjugated
Storage:	Store at -20°C as received.
Stability:	Stable for 12 months from date of receipt.
Predicted Protein Size:	60 kDa
Gene Name:	solute carrier family 22 member 11
Database Link:	<a href="#">NP_060954</a> <a href="#">Entrez Gene 55867 Human</a> <a href="#">Q9NSA0</a>



[View online »](#)

**Background:**

SLC22A11 is involved in the sodium-independent transport and excretion of organic anions, some of which are potentially toxic. SLC22A11 is an integral membrane protein and is found mainly in the kidney and in the placenta, where it may act to prevent potentially harmful organic anions from reaching the fetus. The protein encoded by this gene is involved in the sodium-independent transport and excretion of organic anions, some of which are potentially toxic. The encoded protein is an integral membrane protein and is found mainly in the kidney and in the placenta, where it may act to prevent potentially harmful organic anions from reaching the fetus. Publication Note: This RefSeq record includes a subset of the publications that are available for this gene. Please see the Entrez Gene record to access additional publications.

**Synonyms:**

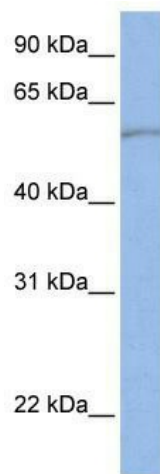
hOAT4; OAT4

**Note:**

Immunogen sequence homology: Human: 100%; Dog: 79%

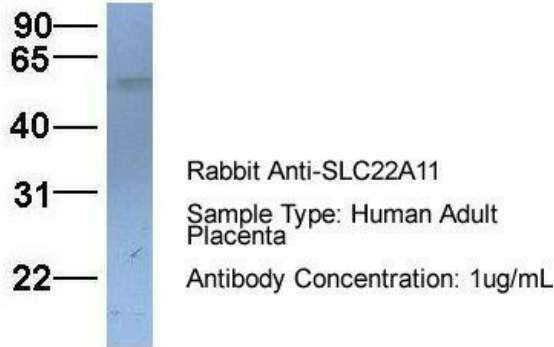
**Protein Families:**

Transmembrane

**Product images:**

WB Suggested Anti-SLC22A11 Antibody Titration:  
0.2-1 ug/ml; Positive Control: Human Liver

## SLC22A11



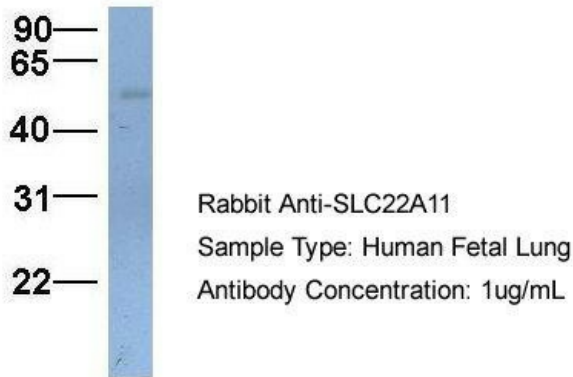
Host: Rabbit; Target Name: SLC22A11; Sample Tissue: Human Adult Placenta; Antibody Dilution: 1.0 ug/ml

## SLC22A11



Host: Rabbit; Target Name: SLC22A11; Sample Tissue: Human Fetal Heart; Antibody Dilution: 1.0 ug/ml

## SLC22A11



Host: Rabbit; Target Name: SLC22A11; Sample Tissue: Human Fetal Lung; Antibody Dilution: 1.0 ug/ml