

Product datasheet for **TA333747**

glycerol 3 phosphate permease (SLC37A1) Rabbit Polyclonal Antibody

Product data:

Product Type:	Primary Antibodies
Applications:	WB
Recommended Dilution:	WB
Reactivity:	Human
Host:	Rabbit
Isotype:	IgG
Clonality:	Polyclonal
Immunogen:	The immunogen for Anti-SLC37A1 Antibody: synthetic peptide directed towards the middle region of human SLC37A1. Synthetic peptide located within the following region: LKIPGVIEFSLCLLFAKLVSYTFLFWLPLYITNVDHLDAKKAGELSTLFD
Formulation:	Liquid. Purified antibody supplied in 1x PBS buffer with 0.09% (w/v) sodium azide and 2% sucrose. <i>Note that this product is shipped as lyophilized powder to China customers.</i>
Purification:	Affinity Purified
Conjugation:	Unconjugated
Storage:	Store at -20°C as received.
Stability:	Stable for 12 months from date of receipt.
Predicted Protein Size:	58 kDa
Gene Name:	solute carrier family 37 member 1
Database Link:	NP_061837 Entrez Gene 54020 Human P57057
Background:	SLC37A1, a member of the sugar-phosphate transport family, transports glycerol-3-phosphate (G3P) between cellular compartments for its utilization in several compartment-specific biochemical pathways.SLC37A1, a member of the sugar-phosphate transport family, transports glycerol-3-phosphate (G3P) between cellular compartments for its utilization in several compartment-specific biochemical pathways. [supplied by OMIM]
Synonyms:	G3PP

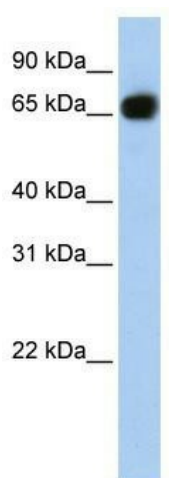


[View online »](#)

Note: Immunogen sequence homology: Rat: 100%; Human: 100%; Pig: 93%; Horse: 93%; Mouse: 93%; Bovine: 93%; Dog: 86%; Rabbit: 86%; Zebrafish: 79%; Guinea pig: 79%

Protein Families: Transmembrane

Product images:



WB Suggested Anti-SLC37A1 Antibody Titration:
0.2-1 ug/ml; ELISA Titer: 1:1562500; Positive
Control: Human brain