

## Product datasheet for **TA333744**

### IL36 gamma (IL36G) Rabbit Polyclonal Antibody

#### Product data:

Product Type:	Primary Antibodies
Applications:	WB
Recommended Dilution:	WB
Reactivity:	Human
Host:	Rabbit
Isotype:	IgG
Clonality:	Polyclonal
Immunogen:	The immunogen for Anti-IL36G Antibody is: synthetic peptide directed towards the middle region of Human IL36G. Synthetic peptide located within the following region: ITCKYPEALEQGRGDPIYLGIQNPPEMCLYCEKVGEPQLQLKEQKIMDLY
Formulation:	Liquid. Purified antibody supplied in 1x PBS buffer with 0.09% (w/v) sodium azide and 2% sucrose. <i>Note that this product is shipped as lyophilized powder to China customers.</i>
Purification:	Affinity Purified
Conjugation:	Unconjugated
Storage:	Store at -20°C as received.
Stability:	Stable for 12 months from date of receipt.
Predicted Protein Size:	19 kDa
Gene Name:	interleukin 36, gamma
Database Link:	<a href="#">NP_062564</a> <a href="#">Entrez Gene 56300 Human</a> <a href="#">Q9NZH8</a>



[View online »](#)

**Background:**

The protein encoded by this gene is a member of the interleukin 1 cytokine family. The activity of this cytokine is mediated by interleukin 1 receptor-like 2 (IL1RL2/IL1R-rp2), and is specifically inhibited by interleukin 1 family, member 5 (IL1F5/IL-1 delta). Interferon-gamma, tumor necrosis factor-alpha and interleukin 1, beta (IL1B) are reported to stimulate the expression of this cytokine in keratinocytes. The expression of this cytokine in keratinocytes can also be induced by a contact hypersensitivity reaction or herpes simplex virus infection. This gene and eight other interleukin 1 family genes form a cytokine gene cluster on chromosome 2.

**Synonyms:**

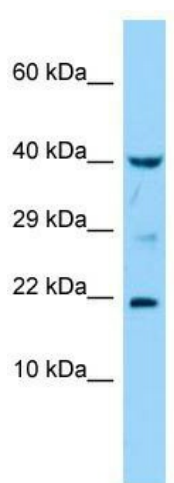
IL-1F9; IL-1H1; IL-1RP2; IL1E; IL1F9; IL1H1; IL1RP2

**Note:**

Immunogen sequence homology: Human: 100%; Horse: 79%; Rabbit: 79%

**Protein Families:**

Druggable Genome, Secreted Protein

**Product images:**

Host: Rabbit; Target Name: IL36G; Sample Tissue: THP-1 Whole Cell lysates; Antibody Dilution: 1.0 ug/ml