

## Product datasheet for **TA333743**

### ATXN7L3 Rabbit Polyclonal Antibody

#### Product data:

Product Type:	Primary Antibodies
Applications:	WB
Recommended Dilution:	WB
Reactivity:	Human
Host:	Rabbit
Isotype:	IgG
Clonality:	Polyclonal
Immunogen:	The immunogen for Anti-ATXN7L3 Antibody is: synthetic peptide directed towards the middle region of Human ATXN7L3. Synthetic peptide located within the following region: MNKSESDQEDNDNDNDWSYGSEKKAKKRKSDKLWYLPFQNPNSPRRSK
Formulation:	Liquid. Purified antibody supplied in 1x PBS buffer with 0.09% (w/v) sodium azide and 2% sucrose. <i>Note that this product is shipped as lyophilized powder to China customers.</i>
Purification:	Affinity Purified
Conjugation:	Unconjugated
Storage:	Store at -20°C as received.
Stability:	Stable for 12 months from date of receipt.
Predicted Protein Size:	38 kDa
Gene Name:	ataxin 7 like 3
Database Link:	<a href="#">NP_064603</a> <a href="#">Entrez Gene 56970 Human</a> <a href="#">Q14CW9</a>



[View online »](#)

**Background:**

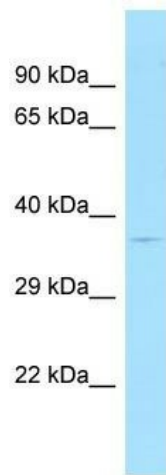
ATXN7L3 is a component of the transcription regulatory histone acetylation (HAT) complex SAGA, a multiprotein complex that activates transcription by remodeling chromatin and mediating histone acetylation and deubiquitination. Within the SAGA complex, ATXN7L3 participates in a subcomplex that specifically deubiquitinates both histones H2A and H2B. The SAGA complex is recruited to specific gene promoters by activators such as MYC, where it is required for transcription. Required for nuclear receptor-mediated transactivation. Within the complex, it is required to recruit USP22 and ENY2 into the SAGA complex.

**Synonyms:**

DKFZp761G2113

**Note:**

Immunogen sequence homology: Dog: 100%; Pig: 100%; Rat: 100%; Horse: 100%; Human: 100%; Mouse: 100%; Bovine: 100%; Rabbit: 100%; Guinea pig: 100%; Zebrafish: 93%

**Product images:**


WB Suggested Anti-ATXN7L3 Antibody; Titration: 1.0 ug/ml; Positive Control: 721\_B Whole Cell