

## Product datasheet for **TA333740**

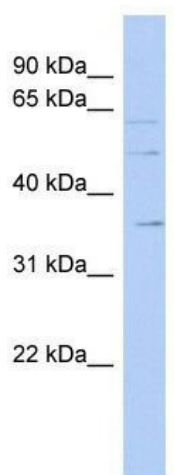
### SLC22A17 Rabbit Polyclonal Antibody

#### Product data:

Product Type:	Primary Antibodies
Applications:	WB
Recommended Dilution:	WB
Reactivity:	Human
Host:	Rabbit
Isotype:	IgG
Clonality:	Polyclonal
Immunogen:	The immunogen for Anti-SLC22A17 Antibody: synthetic peptide directed towards the middle region of human SLC22A17. Synthetic peptide located within the following region: HCYQPVGGGGSPSDFYLCSSLASGTAALACVFLGVTVDRFGRGILLLSM
Formulation:	Liquid. Purified antibody supplied in 1x PBS buffer with 0.09% (w/v) sodium azide and 2% sucrose. <i>Note that this product is shipped as lyophilized powder to China customers.</i>
Purification:	Affinity Purified
Conjugation:	Unconjugated
Storage:	Store at -20°C as received.
Stability:	Stable for 12 months from date of receipt.
Predicted Protein Size:	58 kDa
Gene Name:	solute carrier family 22 member 17
Database Link:	<a href="#">NP_065105</a> <a href="#">Entrez Gene 51310 Human</a> <a href="#">Q8WUG5</a>
Background:	The specific function of this protein remains unknown.
Synonyms:	24p3R; BOCT; BOIT; hBOIT; NGALR; NGALR2; NGALR3
Note:	Immunogen sequence homology: Dog: 100%; Pig: 100%; Rat: 100%; Horse: 100%; Human: 100%; Mouse: 100%; Bovine: 100%; Rabbit: 100%; Guinea pig: 86%
Protein Families:	Druggable Genome, Transmembrane



[View online »](#)

**Product images:**

WB Suggested Anti-SLC22A17 Antibody Titration:  
0.2-1 ug/ml; ELISA Titer: 1:1562500; Positive  
Control: DU145 cell lysate