

## Product datasheet for **TA333739**

### **PGRP1B (PGLYRP4) Rabbit Polyclonal Antibody**

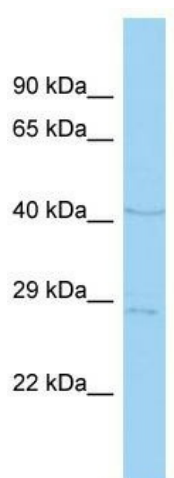
#### **Product data:**

<b>Product Type:</b>	Primary Antibodies
<b>Applications:</b>	WB
<b>Recommended Dilution:</b>	WB
<b>Reactivity:</b>	Human
<b>Host:</b>	Rabbit
<b>Isotype:</b>	IgG
<b>Clonality:</b>	Polyclonal
<b>Immunogen:</b>	The immunogen for Anti-PGLYRP4 Antibody is: synthetic peptide directed towards the N-terminal region of Human PGLYRP4. Synthetic peptide located within the following region: LGIQAWGDSSWNKTQAKQVSEGLQYLFENISQLTEKGLPTDVSTTVSRKA
<b>Formulation:</b>	Liquid. Purified antibody supplied in 1x PBS buffer with 0.09% (w/v) sodium azide and 2% sucrose. <i>Note that this product is shipped as lyophilized powder to China customers.</i>
<b>Purification:</b>	Affinity Purified
<b>Conjugation:</b>	Unconjugated
<b>Storage:</b>	Store at -20°C as received.
<b>Stability:</b>	Stable for 12 months from date of receipt.
<b>Predicted Protein Size:</b>	39 kDa
<b>Gene Name:</b>	peptidoglycan recognition protein 4
<b>Database Link:</b>	<a href="#">NP_065126</a> <a href="#">Entrez Gene 57115 Human</a> <a href="#">Q96LB8</a>
<b>Background:</b>	Peptidoglycan recognition proteins, such as PGRP1-beta, are part of the innate immune system and recognize peptidoglycan, a ubiquitous component of bacterial cell walls.
<b>Synonyms:</b>	PGLYRP1beta; PGRP-1beta; PGRPIB; SBBI67
<b>Note:</b>	Immunogen sequence homology: Human: 100%; Rat: 75%
<b>Protein Families:</b>	Druggable Genome



[View online »](#)

## Product images:



Host: Rabbit; Target Name: PGLYRP4; Sample  
Tissue: 293T Whole Cell lysates; Antibody  
Dilution: 1.0 ug/ml