

## Product datasheet for **TA333738**

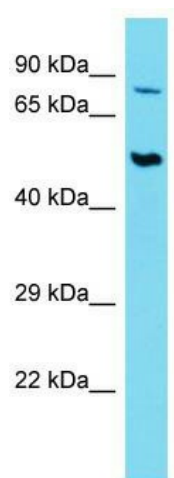
### SLC44A2 Rabbit Polyclonal Antibody

#### Product data:

Product Type:	Primary Antibodies
Applications:	WB
Recommended Dilution:	WB
Reactivity:	Human
Host:	Rabbit
Isotype:	IgG
Clonality:	Polyclonal
Immunogen:	The immunogen for Anti-SLC44A2 Antibody is: synthetic peptide directed towards the middle region of Human SLC44A2. Synthetic peptide located within the following region: IMVWVMIIIMVILVVLGYGIFHCYMEYSRLRGEAGSDVSLVDLGFQTDFRVY
Formulation:	Liquid. Purified antibody supplied in 1x PBS buffer with 0.09% (w/v) sodium azide and 2% sucrose. <i>Note that this product is shipped as lyophilized powder to China customers.</i>
Purification:	Affinity Purified
Conjugation:	Unconjugated
Storage:	Store at -20°C as received.
Stability:	Stable for 12 months from date of receipt.
Predicted Protein Size:	80 kDa
Gene Name:	solute carrier family 44 member 2
Database Link:	<a href="#">NP_065161</a> <a href="#">Entrez Gene 57153 Human</a> <a href="#">Q8IWA5</a>
Background:	Isoform 1, but not isoform 3, exhibits some choline transporter activity.
Synonyms:	CTL2; PP1292
Note:	Immunogen sequence homology: Rat: 100%; Human: 100%; Mouse: 100%; Pig: 93%; Horse: 93%; Bovine: 93%; Rabbit: 93%; Dog: 86%; Guinea pig: 86%
Protein Families:	Transmembrane



[View online »](#)

**Product images:**

Host: Rabbit; Target Name: SLC44A2; Sample  
Tissue: Thymus Tumor lysates; Antibody Dilution:  
1.0 ug/ml