

Product datasheet for **TA333737**

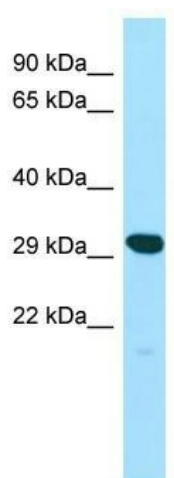
YIF1A Rabbit Polyclonal Antibody

Product data:

Product Type:	Primary Antibodies
Applications:	WB
Recommended Dilution:	WB
Reactivity:	Human
Host:	Rabbit
Isotype:	IgG
Clonality:	Polyclonal
Immunogen:	The immunogen for Anti-YIF1A Antibody is: synthetic peptide directed towards the N-terminal region of Human YIF1A. Synthetic peptide located within the following region: LFDDTSGGYSSQPGGYPATGADVAFSVNHLLGDPMANVAMAYGSSIASHG
Formulation:	Liquid. Purified antibody supplied in 1x PBS buffer with 0.09% (w/v) sodium azide and 2% sucrose. <i>Note that this product is shipped as lyophilized powder to China customers.</i>
Purification:	Affinity Purified
Conjugation:	Unconjugated
Storage:	Store at -20°C as received.
Stability:	Stable for 12 months from date of receipt.
Predicted Protein Size:	32 kDa
Gene Name:	Yip1 interacting factor homolog A, membrane trafficking protein
Database Link:	NP_065203 Entrez Gene 10897 Human O95070
Background:	YIF1A has a possible role in transport between endoplasmic reticulum and Golgi.
Synonyms:	54TM; FinGER7; YIF1; YIF1P
Note:	Immunogen sequence homology: Pig: 100%; Rat: 100%; Horse: 100%; Human: 100%; Bovine: 100%; Guinea pig: 100%; Dog: 93%; Mouse: 93%
Protein Families:	Transmembrane



[View online »](#)

Product images:

WB Suggested Anti-YIF1A Antibody; Titration: 1.0 ug/ml; Positive Control: Jurkat Whole Cell