

## Product datasheet for **TA333736**

### KCC2 (SLC12A5) Rabbit Polyclonal Antibody

#### Product data:

Product Type:	Primary Antibodies
Applications:	WB
Recommended Dilution:	WB
Reactivity:	Human
Host:	Rabbit
Isotype:	IgG
Clonality:	Polyclonal
Immunogen:	The immunogen for Anti-SLC12A5 Antibody: synthetic peptide directed towards the middle region of human SLC12A5. Synthetic peptide located within the following region: VQLIHDQSAPSCSSSPSPGEEPEGEGETDPEKVVHLTWTKDKSVAEKNG
Formulation:	Liquid. Purified antibody supplied in 1x PBS buffer with 0.09% (w/v) sodium azide and 2% sucrose. <i>Note that this product is shipped as lyophilized powder to China customers.</i>
Purification:	Affinity Purified
Conjugation:	Unconjugated
Storage:	Store at -20°C as received.
Stability:	Stable for 12 months from date of receipt.
Predicted Protein Size:	123 kDa
Gene Name:	solute carrier family 12 member 5
Database Link:	<a href="#">NP_065759</a> <a href="#">Entrez Gene 57468 Human</a> <a href="#">Q9H2X9</a>



[View online »](#)

**Background:**

K-Cl cotransporters are proteins that lower intracellular chloride concentrations below the electrochemical equilibrium potential. The protein encoded by this gene is an integral membrane K-Cl cotransporter that can function in either a net efflux or influx pathway, depending on the chemical concentration gradients of potassium and chloride. The encoded protein can act as a homomultimer, or as a heteromultimer with other K-Cl cotransporters, to maintain chloride homeostasis in neurons. Alternative splicing results in two transcript variants encoding different isoforms. [provided by RefSeq, Sep 2008]

**Synonyms:**

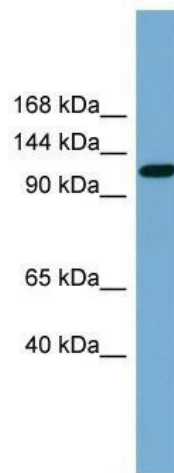
EIEE34; EIG14; hKCC2; KCC2

**Note:**

Immunogen sequence homology: Rat: 100%; Human: 100%; Dog: 93%; Pig: 93%; Guinea pig: 93%; Mouse: 92%; Horse: 86%; Bovine: 86%; Rabbit: 86%

**Protein Families:**

Transmembrane

**Product images:**

WB Suggested Anti-SLC12A5 Antibody Titration:  
0.2-1 ug/ml; Positive Control: Human Spleen