

Product datasheet for **TA333735**

KCC2 (SLC12A5) Rabbit Polyclonal Antibody

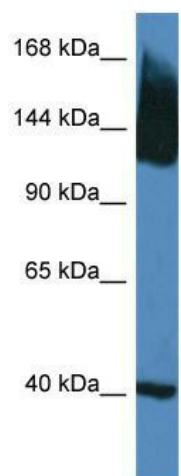
Product data:

Product Type:	Primary Antibodies
Applications:	WB
Recommended Dilution:	WB
Reactivity:	Mouse
Host:	Rabbit
Isotype:	IgG
Clonality:	Polyclonal
Immunogen:	The immunogen for Anti-Slc12a5 Antibody: synthetic peptide corresponding to a region of Mouse. Synthetic peptide located within the following region: TDCEDGDGGANPGDGNPKESSPFINSTDTEKGREYDGRNMALFEEEMDTS
Formulation:	Liquid. Purified antibody supplied in 1x PBS buffer with 0.09% (w/v) sodium azide and 2% sucrose. <i>Note that this product is shipped as lyophilized powder to China customers.</i>
Purification:	Affinity Purified
Conjugation:	Unconjugated
Storage:	Store at -20°C as received.
Stability:	Stable for 12 months from date of receipt.
Predicted Protein Size:	123 kDa
Gene Name:	solute carrier family 12 member 5
Database Link:	NP_065759 Entrez Gene 57138 Mouse Q9H2X9
Background:	The function of this protein remains unknown.
Synonyms:	EIEE34; EIG14; hKCC2; KCC2
Note:	Immunogen sequence homology: Dog: 100%; Rat: 100%; Human: 100%; Mouse: 100%; Bovine: 100%; Rabbit: 100%
Protein Families:	Transmembrane



[View online »](#)

Product images:



WB Suggested Anti-Slc12a5 Antibody; Titration:
1.0 ug/ml; Positive Control: Mouse Brain