

Product datasheet for **TA333734**

JCAD Rabbit Polyclonal Antibody

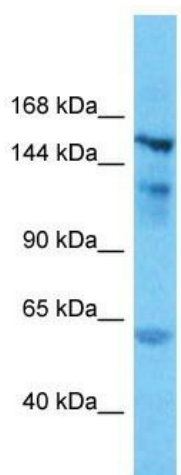
Product data:

Product Type:	Primary Antibodies
Applications:	WB
Recommended Dilution:	WB
Reactivity:	Human
Host:	Rabbit
Isotype:	IgG
Clonality:	Polyclonal
Immunogen:	The immunogen for Anti-KIAA1462 Antibody is: synthetic peptide directed towards the N-terminal region of Human KIAA1462. Synthetic peptide located within the following region: QAARTGTRAGQGLQNGHEDGPAALAHKTSAGKGHVSDSESRRSTPRGHG
Formulation:	Liquid. Purified antibody supplied in 1x PBS buffer with 0.09% (w/v) sodium azide and 2% sucrose.
Purification:	Affinity Purified
Conjugation:	Unconjugated
Storage:	Store at -20°C as received.
Stability:	Stable for 12 months from date of receipt.
Predicted Protein Size:	149 kDa
Gene Name:	KIAA1462
Database Link:	NP_065899 Entrez Gene 57608 Human Q9P266
Background:	The function of this protein remains unknown.
Synonyms:	JCAD
Note:	Immunogen sequence homology: Human: 100%



[View online »](#)

Product images:



Host: Rabbit
Target Name: KIAA1462
Sample Tissue: 721_B Cell Lysate
Antibody Dilution: 1.0µg/ml

Host: Rabbit; Target Name: KIAA1462; Sample
Tissue: 721_B Whole Cell lysates; Antibody
Dilution: 1.0 ug/ml