

Product datasheet for **TA333733**

SLC7A14 Rabbit Polyclonal Antibody

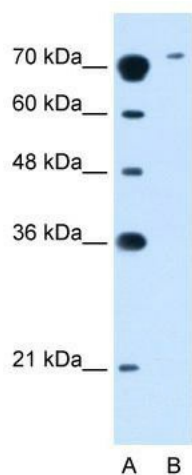
Product data:

Product Type:	Primary Antibodies
Applications:	IHC, WB
Recommended Dilution:	WB, IHC
Reactivity:	Human
Host:	Rabbit
Isotype:	IgG
Clonality:	Polyclonal
Immunogen:	The immunogen for Anti-SLC7A14 Antibody: synthetic peptide directed towards the N terminal of human SLC7A14. Synthetic peptide located within the following region: VAFFIGWNLILEYLIGTAAGASALSSMFDSLANTISRWMADSVGTLNGL
Formulation:	Liquid. Purified antibody supplied in 1x PBS buffer with 0.09% (w/v) sodium azide and 2% sucrose.
Purification:	Affinity Purified
Conjugation:	Unconjugated
Storage:	Store at -20°C as received.
Stability:	Stable for 12 months from date of receipt.
Predicted Protein Size:	85 kDa
Gene Name:	solute carrier family 7 member 14
Database Link:	NP_066000 Entrez Gene 57709 Human Q8TBB6
Background:	The function remains unknown.
Synonyms:	PPP1R142
Note:	Immunogen sequence homology: Dog: 100%; Pig: 100%; Rat: 100%; Horse: 100%; Human: 100%; Mouse: 100%; Bovine: 100%; Rabbit: 100%; Zebrafish: 100%; Guinea pig: 100%
Protein Families:	Druggable Genome, Transmembrane

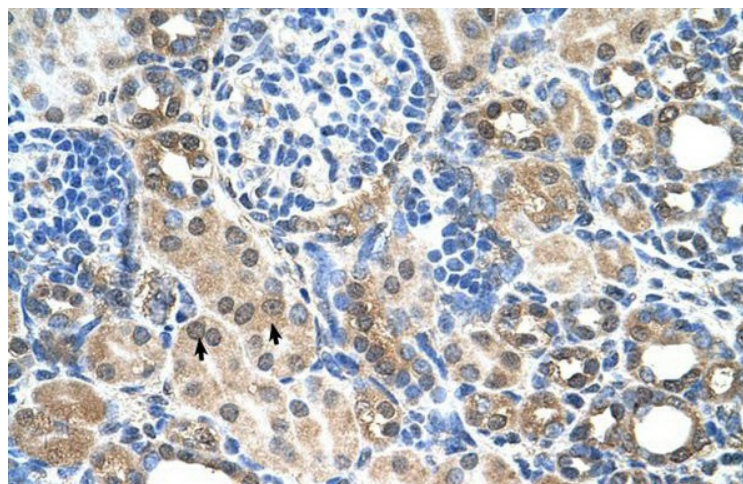


[View online »](#)

Product images:



WB Suggested Anti-SLC7A14 Antibody Titration:
2.5 ug/ml; Positive Control: Jurkat cell lysate



Human kidney