

Product datasheet for **TA333731**

SLC15A2 Rabbit Polyclonal Antibody

Product data:

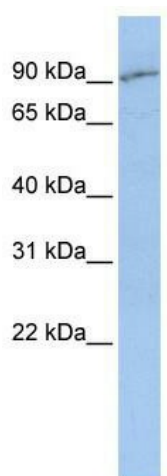
Product Type:	Primary Antibodies
Applications:	WB
Recommended Dilution:	WB
Reactivity:	Human
Host:	Rabbit
Isotype:	IgG
Clonality:	Polyclonal
Immunogen:	The immunogen for Anti-SLC15A2 Antibody: synthetic peptide directed towards the middle region of human SLC15A2. Synthetic peptide located within the following region: GNENNSLLIESIKSFQKTPHYSKLHLKTKSQDFHFHLKYHNLSLYTEHSV
Formulation:	Liquid. Purified antibody supplied in 1x PBS buffer with 0.09% (w/v) sodium azide and 2% sucrose. <i>Note that this product is shipped as lyophilized powder to China customers.</i>
Purification:	Affinity Purified
Conjugation:	Unconjugated
Storage:	Store at -20°C as received.
Stability:	Stable for 12 months from date of receipt.
Predicted Protein Size:	82 kDa
Gene Name:	solute carrier family 15 member 2
Database Link:	NP_066568 Entrez Gene 6565 Human Q16348
Background:	SLC15A2 belongs to the PTR2/POT transporter (TC 2.A.17) family. It is a multi-pass membrane protein. The expression/activity of PEPT2 (SLC15A2) may be a critical factor in the modulation of opioidergic neurotransmission in vivo.
Synonyms:	PEPT2
Note:	Immunogen sequence homology: Human: 100%; Horse: 93%; Rabbit: 93%; Pig: 86%; Bovine: 86%; Dog: 83%; Rat: 79%; Mouse: 79%; Guinea pig: 79%



[View online »](#)

Protein Families: Transmembrane

Product images:



WB Suggested Anti-SLC15A2 Antibody Titration:
0.2-1 ug/ml; ELISA Titer: 1:312500; Positive
Control: MCF7 cell lysate SLC15A2 is supported by
BioGPS gene expression data to be expressed in
MCF7