

Product datasheet for **TA333730**

ZNF8 Rabbit Polyclonal Antibody

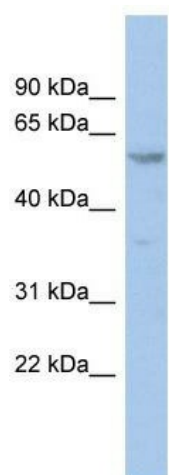
Product data:

Product Type:	Primary Antibodies
Applications:	WB
Recommended Dilution:	WB
Reactivity:	Human
Host:	Rabbit
Isotype:	IgG
Clonality:	Polyclonal
Immunogen:	The immunogen for Anti-ZNF8 Antibody: synthetic peptide directed towards the N terminal of human ZNF8. Synthetic peptide located within the following region: TQEEWGQLDPTQRILYRDVMLETFGHLLSIGPELPKPEVISQLEQGTELW
Formulation:	Liquid. Purified antibody supplied in 1x PBS buffer with 0.09% (w/v) sodium azide and 2% sucrose. <i>Note that this product is shipped as lyophilized powder to China customers.</i>
Purification:	Affinity Purified
Conjugation:	Unconjugated
Storage:	Store at -20°C as received.
Stability:	Stable for 12 months from date of receipt.
Predicted Protein Size:	65 kDa
Gene Name:	zinc finger protein 8
Database Link:	NP_066575 Entrez Gene 7554 Human P17098
Background:	ZNF8 may be involved in transcriptional regulation.
Synonyms:	HF.18; Zfp128
Note:	Immunogen sequence homology: Human: 100%; Dog: 93%; Horse: 93%; Bovine: 86%; Rat: 79%; Mouse: 79%



[View online »](#)

Product images:



WB Suggested Anti-ZNF8 Antibody Titration: 0.2-1 ug/ml; ELISA Titer: 1:312500; Positive Control: THP-1 cell lysate