

Product datasheet for **TA333729**

SLCO1A2 Rabbit Polyclonal Antibody

Product data:

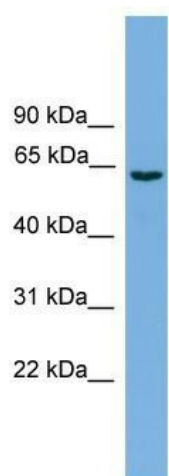
| | |
|-------------------------|--|
| Product Type: | Primary Antibodies |
| Applications: | IHC, WB |
| Recommended Dilution: | WB |
| Reactivity: | Human |
| Host: | Rabbit |
| Isotype: | IgG |
| Clonality: | Polyclonal |
| Immunogen: | The immunogen for Anti-SLCO1A2 Antibody: synthetic peptide directed towards the middle region of human SLCO1A2. Synthetic peptide located within the following region: VCGNNGLSYLSACLACGSETSIGTGINMVFQNCSCIQTSGNSSAVLGLCDK |
| Formulation: | Liquid. Purified antibody supplied in 1x PBS buffer with 0.09% (w/v) sodium azide and 2% sucrose. <i>Note that this product is shipped as lyophilized powder to China customers.</i> |
| Purification: | Affinity Purified |
| Conjugation: | Unconjugated |
| Storage: | Store at -20°C as received. |
| Stability: | Stable for 12 months from date of receipt. |
| Predicted Protein Size: | 64 kDa |
| Gene Name: | solute carrier organic anion transporter family member 1A2 |
| Database Link: | NP_066580 Entrez Gene 6579 Human P46721 |
| Background: | SLCO1A2 is a sodium-independent transporter which mediates cellular uptake of organic ions in the liver. Its substrates include bile acids, bromosulphophthalein, and some steroidal compounds. The protein is a member of the SLC21A family of solute carriers. |
| Synonyms: | OATP; OATP-A; OATP1A2; SLC21A3 |
| Note: | Immunogen sequence homology: Dog: 100%; Human: 100%; Pig: 93%; Rat: 93%; Horse: 93%; Mouse: 93%; Bovine: 93%; Guinea pig: 93%; Rabbit: 79% |



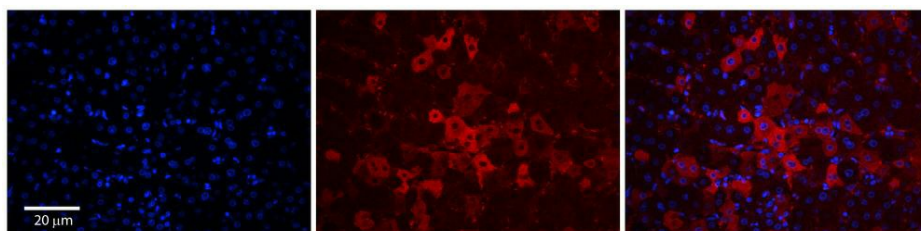
[View online »](#)

Protein Families: Transmembrane

Product images:



WB Suggested Anti-SLCO1A2 Antibody Titration: 0.2-1 ug/ml; ELISA Titer: 1:312500; Positive Control: PANC1 cell lysate; SLCO1A2 is strongly supported by BioGPS gene expression data to be expressed in Human PANC1 cells



Rabbit Anti-SLCO1A2 Antibody; Formalin Fixed Paraffin Embedded Tissue: Human Adult Liver; Observed Staining: Membrane, Cytoplasm in hepatocytes, very strong, moderate tissue distribution; Primary Antibody Concentration: 1:100; Secondary Antibody: Donkey a