

Product datasheet for **TA333728**

COTL1 Rabbit Polyclonal Antibody

Product data:

Product Type:	Primary Antibodies
Applications:	WB
Recommended Dilution:	WB
Reactivity:	Human
Host:	Rabbit
Isotype:	IgG
Clonality:	Polyclonal
Immunogen:	The immunogen for Anti-COTL1 Antibody: synthetic peptide directed towards the N terminal of human COTL1. Synthetic peptide located within the following region: MATKIDKEACRAAYNLVRDDGSAVIWVTFKYDGSTIVPGEQGAEYQHFIQ
Formulation:	Liquid. Purified antibody supplied in 1x PBS buffer with 0.09% (w/v) sodium azide and 2% sucrose. <i>Note that this product is shipped as lyophilized powder to China customers.</i>
Purification:	Affinity Purified
Conjugation:	Unconjugated
Storage:	Store at -20°C as received.
Stability:	Stable for 12 months from date of receipt.
Predicted Protein Size:	16 kDa
Gene Name:	coactosin like F-actin binding protein 1
Database Link:	NP_066972 Entrez Gene 23406 Human Q14019
Background:	This gene encodes one of the numerous actin-binding proteins which regulate the actin cytoskeleton. This protein binds F-actin, and also interacts with 5-lipoxygenase, which is the first committed enzyme in leukotriene biosynthesis. Although this gene has been reported to map to chromosome 17 in the Smith-Magenis syndrome region, the best alignments for this gene are to chromosome 16. The Smith-Magenis syndrome region is the site of two related pseudogenes. [provided by RefSeq, Jul 2008]

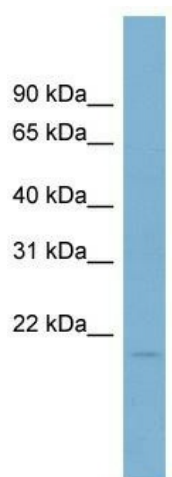


[View online »](#)

Synonyms: CLP

Note: Immunogen sequence homology: Rat: 100%; Horse: 100%; Human: 100%; Mouse: 100%; Rabbit: 100%; Pig: 85%; Bovine: 85%; Guinea pig: 85%; Zebrafish: 83%

Product images:



WB Suggested Anti-COTL1 Antibody Titration: 0.2-1 ug/ml; ELISA Titer: 1: 312500; Positive Control: Human Thymus