

Product datasheet for **TA333727**

ZnT1 (SLC30A1) Rabbit Polyclonal Antibody

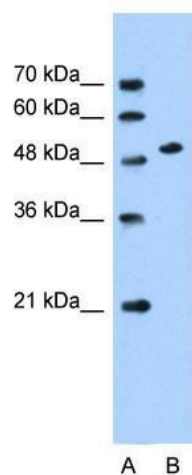
Product data:

Product Type:	Primary Antibodies
Applications:	WB
Recommended Dilution:	WB
Reactivity:	Human
Host:	Rabbit
Isotype:	IgG
Clonality:	Polyclonal
Immunogen:	The immunogen for Anti-SLC30A1 Antibody: synthetic peptide directed towards the middle region of human SLC30A1. Synthetic peptide located within the following region: FCVNPCFPDPCKAFVEIINSTHASVYEAGPCWVLYLDPTLCVVMVCILLY
Formulation:	Liquid. Purified antibody supplied in 1x PBS buffer with 0.09% (w/v) sodium azide and 2% sucrose. <i>Note that this product is shipped as lyophilized powder to China customers.</i>
Purification:	Affinity Purified
Conjugation:	Unconjugated
Storage:	Store at -20°C as received.
Stability:	Stable for 12 months from date of receipt.
Predicted Protein Size:	55 kDa
Gene Name:	solute carrier family 30 member 1
Database Link:	NP_067017 Entrez Gene 7779 Human Q9Y6M5
Background:	SLC30A1 may be involved in zinc transport out of the cell.
Synonyms:	ZNT1; ZRC1
Note:	Immunogen sequence homology: Human: 100%; Dog: 86%; Pig: 86%; Rat: 86%; Horse: 86%; Rabbit: 86%
Protein Families:	Transmembrane



[View online »](#)

Product images:



WB Suggested Anti-SLC30A1 Antibody Titration:
0.2-1 ug/ml; Positive Control: HepG2 cell lysate