

## Product datasheet for **TA333725**

### SLC4A5 Rabbit Polyclonal Antibody

#### Product data:

Product Type:	Primary Antibodies
Applications:	WB
Recommended Dilution:	WB
Reactivity:	Human
Host:	Rabbit
Isotype:	IgG
Clonality:	Polyclonal
Immunogen:	The immunogen for Anti-SLC4A5 Antibody: synthetic peptide directed towards the N terminal of human SLC4A5. Synthetic peptide located within the following region: RWSKPHVSTLSLHSLFELRTCLQTGTVLLDLDSGSLPQIIDDVIEKQIED
Formulation:	Liquid. Purified antibody supplied in 1x PBS buffer with 0.09% (w/v) sodium azide and 2% sucrose. <i>Note that this product is shipped as lyophilized powder to China customers.</i>
Purification:	Affinity Purified
Conjugation:	Unconjugated
Storage:	Store at -20°C as received.
Stability:	Stable for 12 months from date of receipt.
Predicted Protein Size:	126 kDa
Gene Name:	solute carrier family 4 member 5
Database Link:	<a href="#">NP_067019</a> <a href="#">Entrez Gene 57835 Human</a> <a href="#">Q9BY07</a>
Background:	This gene encodes a member of the sodium bicarbonate cotransporter (NBC) family, part of the bicarbonate transporter superfamily. Sodium bicarbonate cotransporters are involved in intracellular pH regulation and electroneutral or electrogenic sodium bicarbonate transport. This protein is thought to be an integral membrane protein. Multiple transcript variants encoding different isoforms have been found for this gene, but the biological validity of some variants has not been determined.



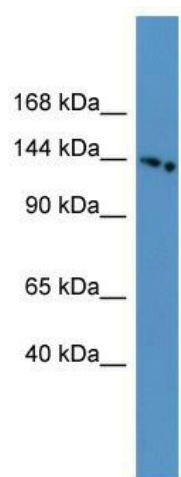
[View online »](#)

**Synonyms:** NBC4; NBCe2

**Note:** Immunogen sequence homology: Dog: 100%; Pig: 100%; Rat: 100%; Horse: 100%; Human: 100%; Mouse: 100%; Bovine: 100%; Rabbit: 100%; Zebrafish: 100%; Guinea pig: 100%

**Protein Families:** Transmembrane

**Product images:**



WB Suggested Anti-SLC4A5 Antibody Titration:  
0.2-1 ug/ml; ELISA Titer: 1:12500; Positive Control:  
HepG2 cell lysate