

Product datasheet for TA333724

LY6G6D Rabbit Polyclonal Antibody

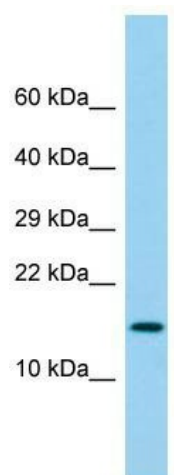
Product data:

Product Type:	Primary Antibodies
Applications:	WB
Recommended Dilution:	WB
Reactivity:	Human
Host:	Rabbit
Isotype:	IgG
Clonality:	Polyclonal
Immunogen:	The immunogen for Anti-LY6G6D Antibody is: synthetic peptide directed towards the N-terminal region of Human LY6G6D. Synthetic peptide located within the following region: LGAALGNRMRCYNCGSPSSSCKEAVTTCGEGRPQPGLEQIKLPGNPPVT
Formulation:	Liquid. Purified antibody supplied in 1x PBS buffer with 0.09% (w/v) sodium azide and 2% sucrose.
Purification:	Affinity Purified
Conjugation:	Unconjugated
Storage:	Store at -20°C as received.
Stability:	Stable for 12 months from date of receipt.
Predicted Protein Size:	15 kDa
Gene Name:	lymphocyte antigen 6 complex, locus G6D
Database Link:	NP_067069 Entrez Gene 58530 Human O95868
Background:	LY6G6D belongs to a cluster of leukocyte antigen-6 (LY6) genes located in the major histocompatibility complex (MHC) class III region on chromosome 6. Members of the LY6 superfamily typically contain 70 to 80 amino acids, including 8 to 10 cysteines. Most LY6 proteins are attached to the cell surface by a glycosylphosphatidylinositol (GPI) anchor that is directly involved in signal transduction.
Synonyms:	C6orf23; G6D; LY6-D; MEGT1; NG25
Note:	Immunogen sequence homology: Human: 100%



[View online »](#)

Product images:



Host: Rabbit; Target Name: LY6G6D; Sample
Tissue: Fetal Lung lysates; Antibody Dilution: 1.0
ug/ml