

Product datasheet for TA333722

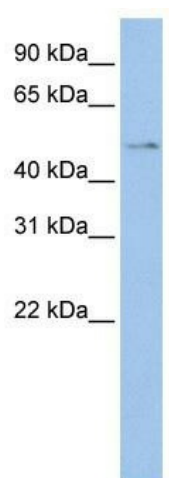
TSPYL4 Rabbit Polyclonal Antibody

Product data:

Product Type:	Primary Antibodies
Applications:	WB
Recommended Dilution:	WB
Reactivity:	Human
Host:	Rabbit
Isotype:	IgG
Clonality:	Polyclonal
Immunogen:	The immunogen for Anti-TSPYL4 Antibody: synthetic peptide directed towards the middle region of human TSPYL4. Synthetic peptide located within the following region: QKEKKVAGGVKEETRPRAPKINNCMDSLEAIDQELSNVNAQADRAFLQLE
Formulation:	Liquid. Purified antibody supplied in 1x PBS buffer with 0.09% (w/v) sodium azide and 2% sucrose. <i>Note that this product is shipped as lyophilized powder to China customers.</i>
Purification:	Affinity Purified
Conjugation:	Unconjugated
Storage:	Store at -20°C as received.
Stability:	Stable for 12 months from date of receipt.
Predicted Protein Size:	45 kDa
Gene Name:	TSPY-like 4
Database Link:	NP_067680 Entrez Gene 23270 Human Q9UJ04
Background:	TSPYL4 belongs to the nucleosome assembly protein (NAP) family. The functions of TSPYL4 remain unknown.
Synonyms:	dJ486I3.2
Note:	Immunogen sequence homology: Dog: 100%; Pig: 100%; Rat: 100%; Horse: 100%; Human: 100%; Mouse: 100%; Bovine: 100%; Rabbit: 100%; Guinea pig: 83%



[View online »](#)

Product images:

WB Suggested Anti-TSPYL4 Antibody Titration:
0.2-1 ug/ml; ELISA Titer: 1: 62500; Positive
Control: Jurkat cell lysate TSPYL4 is supported by
BioGPS gene expression data to be expressed in
Jurkat