

## Product datasheet for **TA333721**

### SLC25A19 Rabbit Polyclonal Antibody

#### Product data:

Product Type:	Primary Antibodies
Applications:	WB
Recommended Dilution:	WB
Reactivity:	Human
Host:	Rabbit
Isotype:	IgG
Clonality:	Polyclonal
Immunogen:	The immunogen for Anti-SLC25A19 Antibody: synthetic peptide directed towards the middle region of human SLC25A19. Synthetic peptide located within the following region: VHRGSVYDAREFSVHFVCGGLAACMATLTVHPVDVLRTFAAQGEPKVYN
Formulation:	Liquid. Purified antibody supplied in 1x PBS buffer with 0.09% (w/v) sodium azide and 2% sucrose.
Purification:	Affinity Purified
Conjugation:	Unconjugated
Storage:	Store at -20°C as received.
Stability:	Stable for 12 months from date of receipt.
Predicted Protein Size:	35 kDa
Gene Name:	solute carrier family 25 member 19
Database Link:	<a href="#">NP_068380</a> <a href="#">Entrez Gene 60386 Human</a> <a href="#">Q9HC21</a>


[View online »](#)

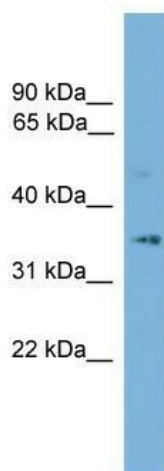
**Background:** This gene encodes a mitochondrial protein that is a member of the solute carrier family. Although this protein was initially thought to be the mitochondrial deoxynucleotide carrier involved in the uptake of deoxynucleotides into the matrix of the mitochondria, further studies have demonstrated that this protein instead functions as the mitochondrial thiamine pyrophosphate carrier, which transports thiamine pyrophosphates into mitochondria. Mutations in this gene cause microcephaly, Amish type, a metabolic disease that results in severe congenital microcephaly, severe 2-ketoglutaric aciduria, and death within the first year. Multiple alternatively spliced variants, encoding the same protein, have been identified for this gene.

**Synonyms:** DNC; MCPHA; MUP1; THMD3; THMD4; TPC

**Note:** Immunogen sequence homology: Rat: 100%; Human: 100%; Mouse: 100%; Rabbit: 100%; Dog: 93%; Pig: 93%; Horse: 93%; Sheep: 93%; Bovine: 93%; Guinea pig: 93%; Yeast: 77%

**Protein Families:** Druggable Genome

### Product images:



WB Suggested Anti-SLC25A19 Antibody Titration:  
0.2-1 ug/ml; Positive Control: HepG2 cell lysate