

## Product datasheet for **TA333720**

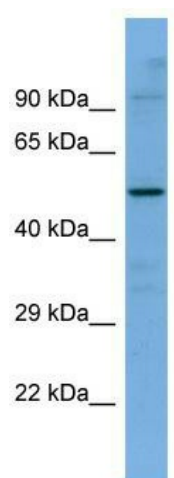
### SLC5A7 Rabbit Polyclonal Antibody

#### Product data:

Product Type:	Primary Antibodies
Applications:	WB
Recommended Dilution:	WB
Reactivity:	Human
Host:	Rabbit
Isotype:	IgG
Clonality:	Polyclonal
Immunogen:	The immunogen for Anti-SLC5A7 Antibody is: synthetic peptide directed towards the C-terminal region of Human SLC5A7. Synthetic peptide located within the following region: ILVKNENIKLDELALVKPRQSMTLSSTFTNKEAFLDVSSEPEGSGETDNL
Formulation:	Liquid. Purified antibody supplied in 1x PBS buffer with 0.09% (w/v) sodium azide and 2% sucrose. <i>Note that this product is shipped as lyophilized powder to China customers.</i>
Purification:	Affinity Purified
Conjugation:	Unconjugated
Storage:	Store at -20°C as received.
Stability:	Stable for 12 months from date of receipt.
Predicted Protein Size:	52 kDa
Gene Name:	solute carrier family 5 member 7
Database Link:	<a href="#">NP_068587</a> <a href="#">Entrez Gene 60482 Human</a> <a href="#">Q9GZV3</a>
Background:	The function of this protein remains unknown.
Synonyms:	CHT; CHT1; hCHT; HMN7A
Note:	Immunogen sequence homology: Dog: 100%; Rat: 100%; Human: 100%; Mouse: 100%; Rabbit: 100%; Horse: 93%; Pig: 86%; Bovine: 86%; Guinea pig: 86%
Protein Families:	Transmembrane



[View online »](#)

**Product images:**

Host: Rabbit; Target Name: SLC5A7; Sample  
Tissue: ACHN Whole Cell lysates; Antibody  
Dilution: 1.0 ug/ml