

Product datasheet for **TA333719**

SLC5A7 Rabbit Polyclonal Antibody

Product data:

Product Type:	Primary Antibodies
Applications:	WB
Recommended Dilution:	WB
Reactivity:	Human
Host:	Rabbit
Isotype:	IgG
Clonality:	Polyclonal
Immunogen:	The immunogen for Anti-SLC5A7 Antibody: synthetic peptide directed towards the middle region of human SLC5A7. Synthetic peptide located within the following region: DDNGIYNQKFPFKTLAMVTSFLTNICISYLAKYLFESGTLPPKLDVFDVA
Formulation:	Liquid. Purified antibody supplied in 1x PBS buffer with 0.09% (w/v) sodium azide and 2% sucrose. <i>Note that this product is shipped as lyophilized powder to China customers.</i>
Purification:	Affinity Purified
Conjugation:	Unconjugated
Storage:	Store at -20°C as received.
Stability:	Stable for 12 months from date of receipt.
Predicted Protein Size:	63 kDa
Gene Name:	solute carrier family 5 member 7
Database Link:	NP_068587 Entrez Gene 60482 Human Q9GZV3



[View online »](#)

Background:

Choline is a direct precursor of acetylcholine (ACh), a neurotransmitter of the central and peripheral nervous system that regulates a variety of autonomic, cognitive, and motor functions. SLC5A7 is a Na(+)- and Cl(-)- dependent high-affinity transporter that mediates the uptake of choline for acetylcholine synthesis in cholinergic neurons. Choline is a direct precursor of acetylcholine (ACh), a neurotransmitter of the central and peripheral nervous system that regulates a variety of autonomic, cognitive, and motor functions. SLC5A7 is a Na(+)- and Cl(-)- dependent high-affinity transporter that mediates the uptake of choline for acetylcholine synthesis in cholinergic neurons (Apparsundaram et al., 2000 [PubMed 11027560]). [supplied by OMIM]. Publication Note: This RefSeq record includes a subset of the publications that are available for this gene. Please see the Entrez Gene record to access additional publications.

Synonyms:

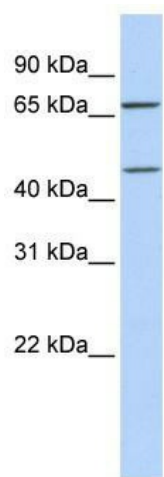
CHT; CHT1; hCHT; HMN7A

Note:

Immunogen sequence homology: Pig: 100%; Rat: 100%; Horse: 100%; Human: 100%; Mouse: 100%; Bovine: 100%; Rabbit: 100%; Guinea pig: 100%; Dog: 93%; Zebrafish: 93%

Protein Families:

Transmembrane

Product images:

WB Suggested Anti-SLC5A7 Antibody Titration:
0.2-1 ug/ml; ELISA Titer: 1:1562500; Positive
Control: 721_B cell lysate