

Product datasheet for **TA333717**

APOBEC3G Rabbit Polyclonal Antibody

Product data:

Product Type:	Primary Antibodies
Applications:	IHC, WB
Recommended Dilution:	WB, IHC
Reactivity:	Human
Host:	Rabbit
Isotype:	IgG
Clonality:	Polyclonal
Immunogen:	The immunogen for Anti-APOBEC3G Antibody: synthetic peptide directed towards the N terminal of human APOBEC3G. Synthetic peptide located within the following region: AKIFRGQVYSELKYHPEMRRFFHWFSKWRKLHRDQEYEV TWYISWSPCTKC
Formulation:	Liquid. Purified antibody supplied in 1x PBS buffer with 0.09% (w/v) sodium azide and 2% sucrose. <i>Note that this product is shipped as lyophilized powder to China customers.</i>
Purification:	Affinity Purified
Conjugation:	Unconjugated
Storage:	Store at -20°C as received.
Stability:	Stable for 12 months from date of receipt.
Predicted Protein Size:	46 kDa
Gene Name:	apolipoprotein B mRNA editing enzyme catalytic subunit 3G
Database Link:	NP_068594 Entrez Gene 60489 Human Q9HC16



[View online »](#)

Background:

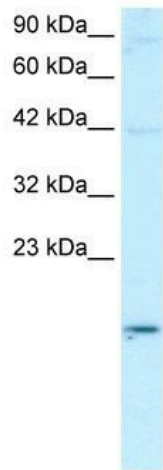
APOBEC3G is a member of the cytidine deaminase gene family. It is one of seven related genes or pseudogenes found in a cluster, thought to result from gene duplication, on chromosome 22. Members of the cluster encode proteins that are structurally and functionally related to the C to U RNA-editing cytidine deaminase APOBEC1. It is thought that the proteins may be RNA editing enzymes and have roles in growth or cell cycle control. The protein encoded by this gene has been found to be a specific inhibitor of human immunodeficiency virus-1 (HIV-1) infectivity.

Synonyms:

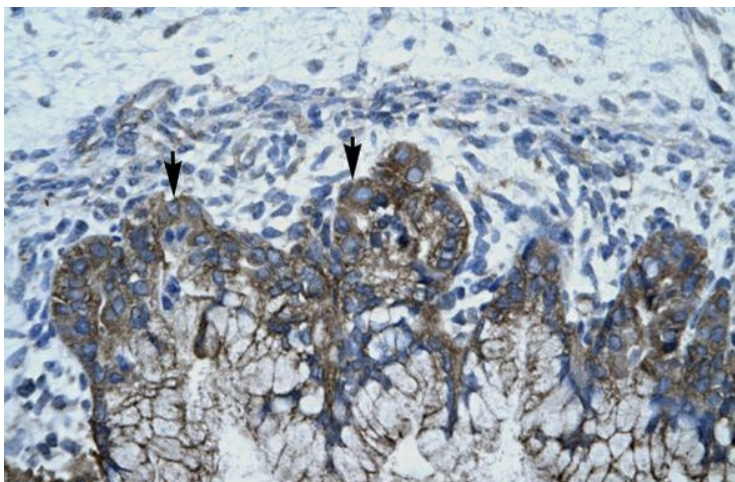
A3G; ARCD; ARP-9; ARP9; bK150C2.7; CEM-15; CEM15; dj494G10.1; MDS019

Note:

Immunogen sequence homology: Human: 100%; Pig: 79%

Product images:


WB Suggested Anti-APOBEC3G Antibody
 Titration: 0.2-1 ug/ml; ELISA Titer: 1:1562500;
 Positive Control: Daudi cell lysate



Human Stomach