

## Product datasheet for TA333715

### SPCS3 Rabbit Polyclonal Antibody

#### Product data:

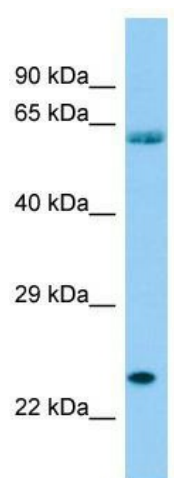
|                         |   |
|-------------------------|---|
| Product Type:           | Primary Antibodies  |
| Applications:           | WB  |
| Recommended Dilution:   | WB  |
| Reactivity:             | Human   |
| Host:                   | Rabbit  |
| Isotype:                | IgG   |
| Clonality:              | Polyclonal  |
| Immunogen:              | The immunogen for Anti-SPCS3 Antibody is: synthetic peptide directed towards the middle region of Human SPCS3. Synthetic peptide located within the following region:<br>VEDFTGPRERSDLGFITFDITADLENIFDWNVKQLFLYLSAEYSTKNNAL |
| Formulation:            | Liquid. Purified antibody supplied in 1x PBS buffer with 0.09% (w/v) sodium azide and 2% sucrose.<br><i>Note that this product is shipped as lyophilized powder to China customers.</i>                                     |
| Purification:           | Affinity Purified   |
| Conjugation:            | Unconjugated  |
| Storage:                | Store at -20°C as received.   |
| Stability:              | Stable for 12 months from date of receipt.  |
| Predicted Protein Size: | 20 kDa  |
| Gene Name:              | signal peptidase complex subunit 3  |
| Database Link:          | <a href="#">NP_068747</a><br><a href="#">Entrez Gene 60559 Human</a><br><a href="#">P61009</a>  |
| Background:             | SPCS3 is a component of the microsomal signal peptidase complex which removes signal peptides from nascent proteins as they are translocated into the lumen of the endoplasmic reticulum.                                   |
| Synonyms:               | 23; PRO3567; SPC3; SPC22; YLR066W   |
| Note:                   | Immunogen sequence homology: Dog: 100%; Pig: 100%; Rat: 100%; Horse: 100%; Human: 100%; Mouse: 100%; Bovine: 100%; Rabbit: 100%; Guinea pig: 100%; Zebrafish: 93%   |



[View online »](#)

Protein Families: Protease, Transmembrane

### Product images:



Host: Rabbit; Target Name: SPCS3; Sample Tissue: THP-1 Whole Cell lysates; Antibody Dilution: 1.0 ug/ml