

Product datasheet for **TA333714**

SLC22A3 Rabbit Polyclonal Antibody

Product data:

Product Type:	Primary Antibodies
Applications:	IHC, WB
Recommended Dilution:	WB, IHC
Reactivity:	Human
Host:	Rabbit
Isotype:	IgG
Clonality:	Polyclonal
Immunogen:	The immunogen for Anti-SLC22A3 Antibody: synthetic peptide directed towards the N terminal of human SLC22A3. Synthetic peptide located within the following region: PDHYWCRGPSAAALAERCGWSPEEWNRTAPASRGPEPPERRGRCQRYLL
Formulation:	Liquid. Purified antibody supplied in 1x PBS buffer with 0.09% (w/v) sodium azide and 2% sucrose. <i>Note that this product is shipped as lyophilized powder to China customers.</i>
Purification:	Affinity Purified
Conjugation:	Unconjugated
Storage:	Store at -20°C as received.
Stability:	Stable for 12 months from date of receipt.
Predicted Protein Size:	61 kDa
Gene Name:	solute carrier family 22 member 3
Database Link:	NP_068812 Entrez Gene 6581 Human O75751



[View online »](#)

Background:

Polyspecific organic cation transporters in the liver, kidney, intestine, and other organs are critical for elimination of many endogenous small organic cations as well as a wide array of drugs and environmental toxins. SLC22A3 contains twelve putative transmembrane domains and is a plasma integral membrane protein. Polyspecific organic cation transporters in the liver, kidney, intestine, and other organs are critical for elimination of many endogenous small organic cations as well as a wide array of drugs and environmental toxins. This gene is one of three similar cation transporter genes located in a cluster on chromosome 6. The encoded protein contains twelve putative transmembrane domains and is a plasma integral membrane protein.

Synonyms:

EMT; EMTH; OCT3

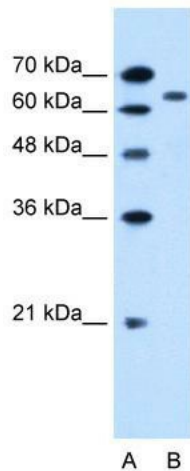
Note:

Immunogen sequence homology: Human: 100%; Pig: 86%; Bovine: 79%

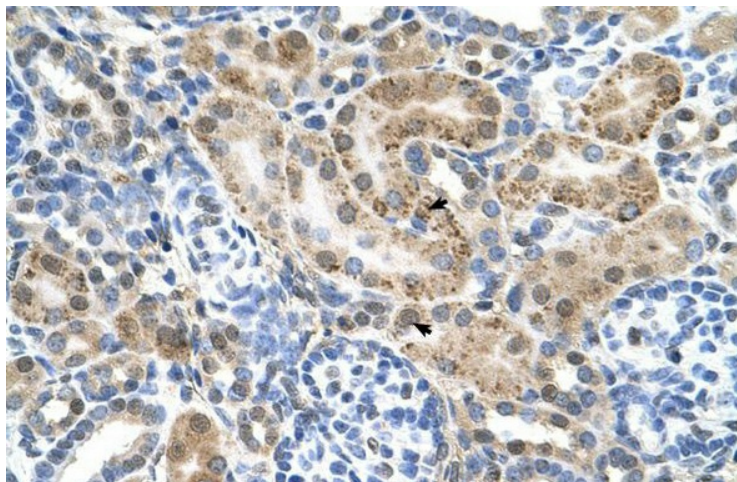
Protein Families:

Transmembrane

Product images:



WB Suggested Anti-SLC22A3 Antibody Titration: 0.2-1 ug/ml; Positive Control: HepG2 cell lysate



Human kidney