

## Product datasheet for **TA333713**

### HSPA2 Rabbit Polyclonal Antibody

#### Product data:

Product Type:	Primary Antibodies
Applications:	WB
Recommended Dilution:	WB
Reactivity:	Human
Host:	Rabbit
Isotype:	IgG
Clonality:	Polyclonal
Immunogen:	The immunogen for Anti-HSPA2 Antibody: synthetic peptide directed towards the middle region of human HSPA2. Synthetic peptide located within the following region: ITITNDKGRLSKDDIDRMVQEAERYKSEDEANRDRVAAKNALESYTYNIK
Formulation:	Liquid. Purified antibody supplied in 1x PBS buffer with 0.09% (w/v) sodium azide and 2% sucrose. <i>Note that this product is shipped as lyophilized powder to China customers.</i>
Purification:	Affinity Purified
Conjugation:	Unconjugated
Storage:	Store at -20°C as received.
Stability:	Stable for 12 months from date of receipt.
Predicted Protein Size:	70 kDa
Gene Name:	heat shock protein family A (Hsp70) member 2
Database Link:	<a href="#">NP_068814</a> <a href="#">Entrez Gene 3306 Human</a> <a href="#">P54652</a>



[View online »](#)

**Background:** HSPA2 belongs to the heat shock protein 70 family. In cooperation with other chaperones, HSPA2 stabilize preexistent proteins against aggregation and mediate the folding of newly translated polypeptides in the cytosol as well as within organelles. These chaperones participate in all these processes through their ability to recognize nonnative conformations of other proteins. They bind extended peptide segments with a net hydrophobic character exposed by polypeptides during translation and membrane translocation, or following stress-induced damage.

**Synonyms:** HSP70-2; HSP70-3

**Note:** Immunogen sequence homology: Dog: 100%; Pig: 100%; Rat: 100%; Goat: 100%; Human: 100%; Mouse: 100%; Bovine: 100%; Rabbit: 100%; Guinea pig: 79%

**Protein Families:** Stem cell - Pluripotency

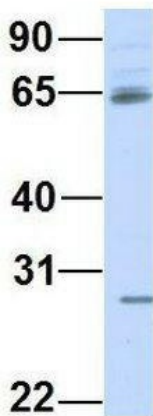
**Protein Pathways:** Antigen processing and presentation, Endocytosis, MAPK signaling pathway, Spliceosome

**Product images:**



WB Suggested Anti-HSPA2 Antibody Titration: 0.2-1 ug/ml; ELISA Titer: 1: 62500; Positive Control: Jurkat cell lysate

**HSPA2**



Rabbit Anti-HSPA2  
Sample Type: Human HeLa  
Antibody Concentration: 1ug/mL

Host: Rabbit; Target Name: HSPA2; Sample Tissue: Human HeLa; Antibody Dilution: 1.0 ug/ml; HSPA2 is supported by BioGPS gene expression data to be expressed in HeLa